

# Prospectus 2018



# SCUT

South China University of Technology

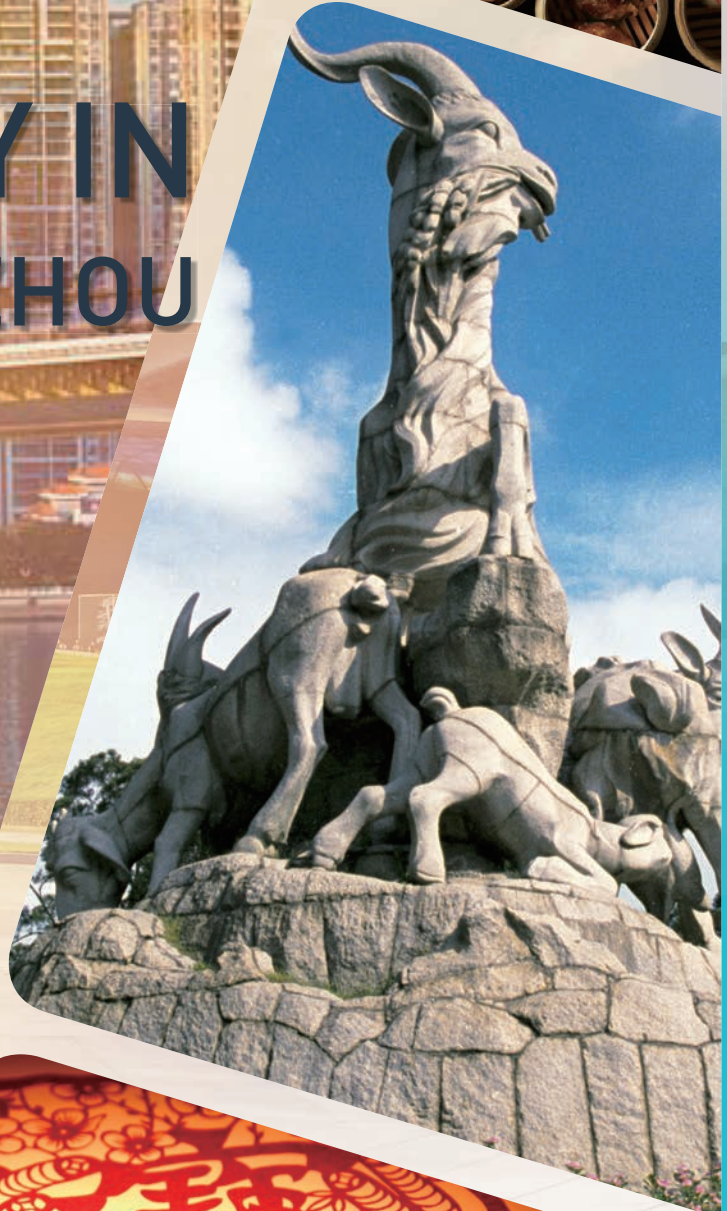
A Cradle of Engineers  
A Birthplace of Entrepreneurs


Guangzhou | China





# STUDY IN GUANGZHOU





**PURSUIING YOUR STUDY IN GUANGZHOU  
OFFERS MORE THAN ACADEMIC ACHIEVEMENT**

**IT OFFERS A RICH LIFESTYLE FILLED WITH  
MULTI-CULTURAL EXPERIENCES**

Guangzhou, the capital of Guangdong Province, is the bustling regional hub of Southern China. The Pearl River provides easy access to the nearby South China Sea, and it is conveniently located near both Hong Kong and Macao. Superior geographical location, vital transportation and communication facilities make Guangzhou China's Southern Gateway to the world.

Guangzhou cherishes its venerable 2,200-year history and highly developed culture. Vigorous economic development has enabled her to create unique architecture, a convenient metro system, excellent intercity transportation, a state-of-the-art international airport, and advanced exhibition centers. These contribute to the redefinition of Guangzhou as a fascinating, international metropolis.

Today, Guangzhou ranks among the top three most economically dynamic and flourishing cities in China, exerting influence on China, Southeast Asia, and the world. More than 100 of the top Fortune global 500 corporations have bases in Guangzhou. The city has successfully hosted the China Import and Export Fair over 100 times since 1957, and it has become a world trade showcase for all of China. At present, the daily international population in Guangzhou ranges from

80,000 to 120,000 and more than 23,000 international students studying in Guangdong Province. The 16th Asian Games were held in Guangzhou in 2010. In 2015, Guangzhou Evergrande football team won the AFC Championship. Guangzhou was the host city of the 2017 Fortune Global Forum.

Guangzhou is home to over twelve million people from across China and around the world, bringing rich cultural, ethnic, and religious diversity. It is the center and birthplace of Lingnan culture, which extends through Guangdong province and across southeastern China, Hong Kong, Macao and into major Chinese communities all over the world. This vibrant cosmopolitan city boasts cinemas, theaters, museums, art galleries, restaurants, cafes, and abundant nightlife. Cantonese cuisine, especially dim sum, is one of the most famous and delicious Chinese Gourmet. Pursuing your education in Guangzhou offers more than academic achievement; it offers a rich lifestyle filled with multi-cultural experiences! The city enjoys a sub-tropical climate with plentiful rainfall year round. Average annual temperature is between 20 and 22 degrees Celsius. Abundant flowers thrive in this favorable climate giving it the nickname "City of Flowers". Guangzhou also boasts one of the largest botanical gardens in the world.

# CONTENTS

- 04 Message from the President
- 05 In the Eyes of International Students
- 07 Introduction to South China University of Technology
- DEGREE PROGRAM IN CHINESE LANGUAGE AND CULTURE**
- 09 Bachelor of Arts in Teaching Chinese to Speakers of Other Language
- ENGLISH-MEDIUM PROGRAMS**
- 13 English-Medium Undergraduate Programs
- 17 English-Medium Master Programs
- 21 English-Medium Ph.D Programs
- 24 International Foundation Program
- NON-DEGREE PROGRAMS OF CHINESE LANGUAGE AND CULTURE**
- 25 General Chinese Program
- 26 Intensive Chinese Program
- 27 International Summer Camp
- CHINESE MEDIUM PROGRAMS**
- 29 Chinese-Medium Undergraduate Programs
- 33 Chinese-Medium Master Programs
- 37 Chinese-Medium Ph.D Programs
- SCHOLARSHIPS**
- 39 Chinese Government Scholarship for Postgraduate Students
- 41 Confucius Institute Scholarship
- 43 SCUT International Scholarship for Excellence
- 44 Guangdong Government for Outstanding International Students Scholarship
- FEES & APPLICATION**
- 45 Fees for Studying at SCUT
- 48 University Facilities
- 50 Application Procedure

# WELCOME

## MESSAGE FROM THE PRESIDENT

Dear students,

Welcome to South China University of Technology, whether you are here to study, do research, or you've just come to visit!

SCUT IS ONE OF THE TOP RESEARCH-INTENSIVE UNIVERSITIES IN CHINA AND A MEMBER OF CHINA'S NATIONAL PROJECT 211, PROJECT 985 and CHINA'S DOUBLE WORLD CLASS PROJECT. WE ARE WIDELY RECOGNIZED AS ONE OF THE MOST CREATIVE AND INFLUENTIAL UNIVERSITIES IN CHINA, ESPECIALLY RENOWN FOR OUR ACADEMIC EXCELLENCE IN ENGINEERING.

With over 60 years of development, SCUT had made ever-increasing progress in size, in structure, and most importantly in academic quality.

Since 2012, SCUT has held a place in the top 500 of QS World University Rankings. In the 2016 QS World University Rankings, South China University of Technology was ranked integrally at 201-300, with engineering ranked top 22. In the US News & World Report's published 2016 Best Global Universities,

and SCUT ranked 400, and either Agriculture Science, Engineering, and Chemistry ranked 40, 41 and 69 respectively in these fields. Moreover, Essential Science Indicators (ESI) ranks nine of SCUT's majors in the top 1% and seven of our majors in the top 10% nationally. We are proud that the university today has over 100 national and provincial research institutes, funding major scientific research projects like the 973 Plan and employing many distinguished scholars including academicians of the Chinese Academy of Sciences and chair professors of Chang-Jiang Scholars Program.

Guided by the university motto of "Study Extensively, Reflect Carefully, Discriminate Clearly, Practice Earnestly", SCUT has cultivated the exclusive technological and managerial talents demanded by today's evolving society. Since our founding, the university has produced over 380,000 graduates. Many of these have gone on to become technological mainstays, distinguished entrepreneurs, and leading politicians. SCUT has appropriately been called "a cradle of engineers" and "a birthplace of entrepreneurs".

SCUT is committed to international academic exchange and has links with hundreds of overseas universities. In 2017, our international students numbered over 2,300 coming from 130 countries. The School of International Education (SIE) is an organization of SCUT that is responsible for the recruitment, management, and education of international students. We feel confident that you will have a pleasant experience with our team of committed teachers and staff and will value our supportive hand for years to come.

Selecting the right academic institution for furthering your studies is one of the most important decisions of your life. You can rest assured that by selecting SCUT you have chosen one of the best academic institutions in China!

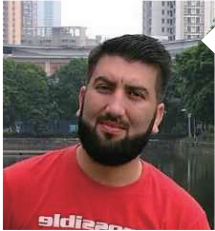
All said, I sincerely wish you a happy and successful academic life at SCUT.



*Wang Yingjun*

Professor Wang Yingjun  
President of South China  
University of Technology

# IN THE EYES OF INTERNATIONAL STUDENTS



I wanted to expose myself to a different culture to enhance my knowledge in Food Science. I chose SCUT because it is a vibrant and old university, where we can best look at the gem of cultural legacies after two civilizations encountered each other over the course of 500 years. I am not only given opportunities to meet great people with a cross-cultural background, but I also know more of Guangzhou as well as Chinese etiquettes and mentality, which will be very beneficial in terms of integration. In a new semester ahead, I look forward to having new lectures and meeting new classmates. The professors are quite friendly and helpful. The course contents look quite interesting. I do believe that the knowledge that I acquire here inside and outside the classroom will definitely broaden my horizon on branding and business management. So far I am really enjoying indulging myself in the learning atmosphere that SCUT has to offer. Everyone I meet is altruistic and willing to help in my quest for knowledge. Also, I enjoy my whole world of learning: in a corner of campus café or in the spacious study room of the campus library. It's so wonderful to learn from one another academically and personally. I love SCUT my new home.

**ZAHOOR AHMED**  
Pakistan, PhD Student  
Food Science and Technology (English-Medium)



ນ້ອງດີໃຈຫລາຍພັນໂອກາດມາສຶກສາຮ່ຽມ  
ການຄ້າຕ່າງປະເທດທີ່ມະຫາໄລຫ້ວນນາວຽງ,  
ໄດ້ເປັນສ່ວນໜຶ່ງຂອງມະຫາໄລຈຸດງົດອັນດັບຕໍ່  
ນຸ່ງຂອງ ສປ.ຈີນ

**MIVILAY XIEONINH**  
Laos, Undergraduate Student,  
Teaching Chinese to Speakers of  
Other Language



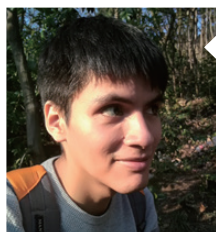
"Trở thành sinh viên của Đại Học Công Nghệ Hoa Nam là ước mơ, là mục tiêu phấn đấu không chỉ của riêng tôi mà còn là của bao bạn trẻ đến từ các quốc gia khác. Môi trường học tập của Hoa Nam là nơi giúp chúng tôi tiếp cận nguồn tri thức mới, cách làm việc khoa học, và trau dồi các kỹ năng mềm cần thiết phục vụ cho công việc và cuộc sống sau này, cũng là nơi để chúng tôi tu dưỡng bản thân để trở thành những công dân có ích cho đất nước mình. Và trường Đại Học Công Nghệ Hoa Nam sẽ là nơi giúp tôi thực hiện được ước mơ đó."

**HOANG THI MY HANH**  
Vietnam, Master's Student  
Journalism and Communication



ບັນຫາທີ່ໃຫຍ່ທີ່ສຸດສຳລັບເຮົາຂັ້ນຕົ້ນທີ່ມາຮຽນທີ່ນີ້ຄືບັນຫາເຮືອນການຮຽນ  
ເພາະອຸປະສັກທາງພາສາ ເຮົາແທ້ຈິງຈະພິຈາລະນາສອນໄດ້ບໍ່ເຮືອນເລີຍ  
ຮູ້ສຶກເໝາະແລະທ້ອມກ ເຮົາຄາມອາຈາຍັງວາະດັບພາສາຈີນຂອງເຮົາໃນຕອນນັ້ນ  
ຈະມີບັນຫາຕໍ່ການຮຽນເມີຍ ອາຈາຍັບອກວ່າ ບໍ່ມີບັນຫາເຮືອນ ຖ້າເຮົາບໍ່ເຂົ້າໃຈ  
ຮຽນໃຫ້ເຂົ້າມາຄາມອາຈາຍັງໄດ້ທຸກໆຄັ້ງ ອາຈາຍັດແລະໃຫ້ຄຳປຶກສາ  
ນັກຮຽນຕ່າງຊາດດີມາກ ຈາກທີ່ເຮົາຮູ້ສຶກທ້ອກເລີຍມີຄຳສັ່ງໃຈໃນການຮຽນມາກຂຶ້ນ  
ເຮົາຄິດວ່າການທີ່ໄດ້ມີໂອກາດມາຮຽນໃນຈຸດນີ້ເປັນໂອກາດທີ່ດີແລະສຳຄັນສຳລັບ  
ເຮົາໄດ້ຮູ້ຈັກເພື່ອນຈາກຫຼາຍໆຊາດ ໄດ້ສົມພັນພາສາ ຫຼາກຫຼາຍວິນິດໄນ  
ຄຳເພື່ອນຸ້ມໂອກາດໄດ້ອອກມາຮຽນຕ່າງປະເທດ ຄຳວ່າໂອກາດນີ້ໄວ້ນະ  
ເຮົາຄິດວ່າມັນເປັນປະສົບການທີ່ດີແລະສຸກມາກຈິງຈັງຄື

**JAIBANJOET MEATAVEE**  
Thailand, Master's Student  
Journalism and Communication



My experience in SCUT has been heartwarming. From my very first call to random questions I have now, the teachers have shown admirable patience and they do their best to accommodate you. Life as a foreigner can be challenging at the start due to the language barrier, but gradually you learn day by day and it's a great feeling to be able to see yourself grow. Every day without exception I learn something new both in and out of lectures. Everything is convenient for transportation to many different kinds of shops and services. Lastly, I got a chance to meet many good friends here and we also support each other. SCUT is truly a wonderful choice.

**VARGAS OSCAR JAVIER**

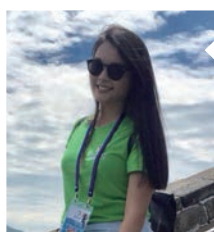
The U.S.A, Master's Student  
Electrical and Computer Engineering (English-medium)



아름다운 캠퍼스  
체계적인 커리큘럼,  
능력있는 교수님이 계신곳!  
화남이공대학은 '사랑'입니다

**YI HYUNJI**

Korea, Master's Student  
Management Science and  
Engineering



Scut foi uma das melhores escolhas que poderia ter feito. Aqui tenho a oportunidade de conhecer pessoas de diversas culturas e países.

**SU WU LUCIANA**

Brazil, Undergraduate Student  
International Economic and Trade  
(English-medium)



Этот университет дал мне много возможностей, не только в учебном плане, но и в моральном, духовном. Здесь я приобрёл себя, здесь я нашёл дружбу, здесь я нашёл любовь. Как сказал один хороший человек: "Здесь я всегда буду тем молодым мальчиком, который не хотел взрослеть".

На мой взгляд, наш университет является одним из самых активных учебных заведений. Каждый день можно увидеть как различные студенческие организации устраивают мероприятия. Я считаю, что это очень полезно для студенческой жизни, это позволяет студентам раскрыть свои возможности, научиться чему-то новому.

Этот университет приведёт Вас к успеху! Добро пожаловать!

**KANALIYEV ZHALGAS**

Kazakhstan, Master's Student  
Corporate Management



لحرم يف تابل لاطلا ى دجأ نوكأ ناب تفرشت  
لبق نم ةفروع لاولم لجال تدجو دقو , ريت سجام ل  
مهل اركشف لم لجال يف هليوط دي مهل رابك هذت اس  
ي ذللا . خم اشلا ي لم لجال حرص ل اذهل اركشو قام لجال نم  
عم لجال هذو انل رخف هبل لطلال نم يرغيك هربت اع  
هيوهه مچل هقرش لم ل روصال نم هروص تسكع يت ل  
نيصل  
هيدوع سلل هيرعلل هكلم للال نم ,, ناهم س

**DANNOUN ASMEHAN YOUNES H**

Saudi Arabia, Master's Student  
International Trade



Pengalaman saya disini sangat berbeda dalam arti yang positif. orang orang disini sangat ramah terutama para seniornya dan gurunya

**LOIS ANDRIAN**

Indonesia, Undergraduate Student  
International Economic and Trade  
(English-medium)

Top **1** %

ESI ranks **nine disciplines**.

Material Science, Chemistry, Engineering, Agricultural Science, Physics, Biology and Biochemistry, Computer Science, Environmental Ecology and Clinical Medicine, comprise this list.

Top **10** subjects

Light Industrial Technology and Engineering, Food Science and Engineering, Urban and Rural Planning, Materials Science and Engineering, Architecture, and Chemical Engineering and Technology. Ranked in the among Chinese universities.

**235<sup>th</sup>**

SCUT was placed in the Section of No. 201-300 in Academic Ranking of World Universities (ARWU), TOP 22 in Engineering area, TOP 11 in China.

**28**

Academies in Members of the Chinese Academy of Science (CAS) or the Chinese Academy of Engineering (CAE).

**6880000**

Collection volume of the university library

Top **50**

Global academic ranking in the discipline of engineering

**2.12** billion RMB

research funding in 2016

**395<sup>th</sup>**

News & World Report published 2016 Best Global Universities

**2400**

International students

**107**

Key Laboratories of provincial and ministry level

**99.83%**

The employment rate of postgraduates, **Top3** in Chinese Universities.

**China's Double World Class project.**

SCUT and its subjects are selected in it.



# INTRODUCTION TO SOUTH CHINA UNIVERSITY OF TECHNOLOGY

South China University of Technology (SCUT) is one of China's leading universities. It operates under the direct leadership of the State Ministry of Education. It is a member of Project 985 and Project 211 which qualifies it as a top institution of teaching and research. Since 2012, SCUT has held a place in the top 500 of QS World University Rankings. In 2013, SCUT was among the first group accredited for the Study in China Model Base by the State Ministry of Education; in 2014, China-ASEAN Joint Engineering Education Center was founded in SCUT by the State Ministry of Foreign Affairs; in 2015, Research Base of Public Diplomacy and Cross-cultural Communication was approved to establish in SCUT by Guangdong Provincial Government; in 2016, SCUT passed the first batch of the University Certification Pilot Program for Quality Certification in China. The international status of SCUT has improved dramatically making it competitive enough to play a role globally.

SCUT is located in Guangzhou which is very near Hong Kong and Macau. It has three campuses: the Wushan campus, the University Town campus, and the International Campus. The Wushan campus is located in the Tianhe District of Guangzhou. It is an attractive area with rolling hills, lakes, lush greenery, and brilliant flowers. This campus has a mixture of both traditional and modern architecture with a truly collegiate feel. The HEMC campus is located in the recently built University Town of Panyu District. It has an open and spacious environment filled with beautiful landscaping and innovative and modern architecture.

Since its establishment in 1952, SCUT has developed into a major comprehensive university that offers multiple disciplines of study including science, engineering, business, management, liberal arts, law, biomedical science, and art design. It is currently composed of 28 colleges offering 82 bachelor degree programs, 118 master degree programs, and 107 Ph.D. programs. Seven subjects—Light Industrial Technology and Engineering, Food Science and Engineering, Urban and Rural Planning, Materials Science and Engineering, Architecture, and Chemical Engineering and Technology—are ranked in the top 10 among Chinese universities. ESI ranks six disciplines in the top 1%. Material Science, Chemistry, Engineering, Agricultural

Science, Physics, and Biology and Biochemistry comprise this list. Since 2012, SCUT has held a place in the top 500 of QS World University Rankings. In the 2016 QS World University Rankings, South China University of Technology was ranked in top 400 integrally, top 50 in engineering, top 100-200 in chemistry, and top 200 in Mathematics and Computer Science. US News & World Report published 2016 Best Global Universities, and SCUT ranked 395, with Agriculture science, engineering, and chemistry ranked in 40, 41 and 69 respectively these fields.

SCUT comprises 4,555 faculty members and 43,000 full-time students. Since its founding, SCUT has graduated over 290,000 students, many of which have gone on to become technological mainstays, distinguished entrepreneurs, and leading politicians. The university has appropriately been dubbed “a cradle of engineers” and “a birthplace of entrepreneurs”.

SCUT strives to be an exceptional example for the entire international university community. It is active in academic exchange and dedicated to promoting collaboration with more than 100 overseas universities. In addition, SCUT has co-constructed three Confucius Institutes, respectively with Lancaster University in the UK; the University of Idaho in the US; and Audi AG, the municipal government of Ingolstadt and Technische Hochschule Ingolstadt (THI) in Germany. In 2016, SCUT had 2,400 international students from 130 countries around the globe. The School of International Education (SIE) is responsible for recruiting, managing and teaching international students. In addition to both long- and short-term Chinese language and culture programs, SIE also offers degree courses like Bachelor of Arts in Chinese as a Foreign Language and Master of Journalism and Communication in the field of teaching Chinese to speakers of other languages.

Guided by the university motto of “Study Extensively, Reflect Carefully, Discriminate Clearly, Practice Earnestly”, we believe that SCUT is paving a wider path to a better tomorrow.

# BACHELOR OF ARTS IN TEACHING CHINESE TO SPEAKERS OF OTHER LANGUAGE





---

## PROGRAM OVERVIEW

---

The Bachelor of Arts in Teaching Chinese to Speakers of Other Language is designed for students who wish to equip themselves with interdisciplinary talents in language communication using a thorough knowledge of the Chinese language and a deep understanding of the social and cultural aspects of China. The School of International Education (SIE) offers students the opportunity to combine their study with established disciplines in the School of Economics and Commerce (SEC). Based on the distinguished record of teaching and research above Schools, the program offers 4 modules in International Relation, Chinese for Business and Trade, Chinese for Tourism, and Teaching Chinese to Speakers of Other Language.

In each program, students study Chinese for the first two years. Upon acquisition of a language foundation, students may then continue on to the final two years for further systematic study with Chinese students in SEC or SIE.

---

## PROGRAM SPECIALITY

---

It provides concurrent Bachelor and Master Program: BA in Chinese as a Foreign Language (4 years) + MA in Journalism and Communication (International Dissemination of Chinese, 3 years).

It offers major courses of MA in Journalism and Communication (International Dissemination of Chinese) as elective courses for those students who are intended to continue their master study in this field.

It has its own Public Diplomacy and Intercultural Communication Research Center.

It owns multiple entrepreneurship centers, such as Stem Cell Technology Corporation International Student Innovation and Entrepreneurship Center.

It provides alumni enterprise internship opportunities.

---

## MAIN COURSES

---

Chinese language courses include Basic Chinese, Intermediate Chinese, Advanced Chinese, Chinese Speaking, Chinese Reading, Chinese Listening, Newspaper Reading, Basic Writing, Dissertation Writing, Chinese Culture, IT Chinese, Scientific Chinese, and Intercultural Communication etc.

## MODULES

### Chinese for Business and Trade

**(1) Course Aim:** This module provides students with the means to cultivate an excellent understanding of the social and cultural aspects of China and also equips them with applicable knowledge of the Chinese language to facilitate a better handling of business and trade, broadening their career paths in this modern international business market.

**(2) Course Structure:** Students in this module take Chinese language courses in Year 1 and Year 2 to achieve competent communication skills. In Year 3 and Year 4, students proceed to studies in business and trade for deeper specialization in international trade, business development of China, and Chinese business culture.

**(3) Curriculum:** Including, but not limited to Survey of Chinese International Trade, Chinese Economics and Geography, Applicable International Trade, English for Business and Trade, Negotiation in International Business, E-Business, Culture of Chinese Business and Trade, Lectures in Business, and Trade.

**(4) Practicum:** Language practice and various opportunities for field work in participating companies and organizations.

### International Relation

**(1) Course Aim:** This module provides students with the means to cultivate an excellent understanding of world politics and economics, international relation, sociology, intercultural communication and foreign management and also equips them with applicable knowledge of foreign public affairs, transnational business, international issue analysis and reporting.

**(2) Course Structure:** Students in this module take Chinese language courses in Year 1 and Year 2 to achieve competent communication skills. In Year 3 and Year 4, students proceed to studies in international relation for deeper specialization in foreign public affairs, transnational business, international issue analysis and reporting.

**(3) Curriculum:** Overview of Chinese National Conditions, The history of China's diplomacy, Comparative Analysis of Electoral System, Intercultural Communication, Principles of Management, Principles of Politics Science, Organizational Behavior, Contemporary Chinese Business Negotiation .

**(4) Practicum:** Language practice, business internship, fieldwork in local governments and newspaper companies, and translation practicum.

### Chinese for Tourism

**(1) Course Aim:** This module provides students with the means to cultivate an excellent understanding of the social and cultural aspects of China, develops skills in using Chinese for tourism, and equips students with an applicable knowledge of the Chinese tourism industry and Chinese culture, history, geography and customs.

**(2) Course Structure:** Students in this module take Chinese language courses in Year 1 and Year 2 to achieve competent communication skills. In Year 3 and Year 4, students proceed to studies in tourism and Chinese culture for deeper specialization and the better handling of tourism management in Chinese.

**(3) Curriculum:** Chinese Tourism Business, Chinese Tourism Culture, Chinese Tourism Geography, Tourism Marketing, Reception Etiquette, Tour Guide Training, Tourism Hospitality Psychology, Lectures in Tourism

**(4) Practicum:** Language practice and field work in the tourism industry.

### Teaching Chinese to Speakers of Other Language

**(1) Course Aim:** This module provides students with the means to cultivate excellence in Chinese language skills, Chinese culture and linguistics. Students master the theories and methodologies of language acquisition, which provides the competence necessary to teach Chinese as a foreign language.

**(2) Course Structure:** Students in this module take Chinese language courses in Year 1 and Year 2 to achieve competent communication skills. In Year 3 and Year 4, students proceed to studies in teaching Chinese as a foreign language to strengthen expertise in Chinese linguistics, literature and culture. Students gain knowledge in the pedagogy and methodology of teaching Chinese as a foreign language.

**(3) Curriculum:** Modern Chinese, Classical Chinese, Chinese Literature, Outline of Chinese Culture, Differences between Chinese and Foreign Cultures, Outline of Teaching Chinese as a Foreign Language, Pedagogy of Teaching Chinese as a Foreign Language

**(4) Practicum:** Internship on language teaching

\* Please note that the course curriculum is subject to change so please check the syllabus updated in each semester.

---

## GRADUATION & CAREER

---

The Bachelor of Arts in Teaching Chinese to Speakers of Other Language Degree requires the New HSK Level 5 with scores above 210, the completion of a minimum of 160 credits, successfully defended a dissertation, and satisfactory academic performance. Eligible graduates may receive a Higher Education Certificate and a Bachelor's Degree from SCUT.

Graduates with Chinese-language and subject-oriented skills are highly sought after in the fields of international business and trade, tourism, hotel management, cultural communication, teaching Chinese, education, translation and interpretation, diplomacy and foreign affairs.

---

## STUDY DURATION

---

### 4 years

\* You are allowed to start from the second or the third academic year depending on your Chinese proficiency. Please refer to Entry Requirements for details.

---

## ADMISSION REQUIREMENTS

---

(1) For 1st year entrance: applicants must have graduated from high school and be above the age of 18. No Chinese language proficiency exams are required.

(2) To transfer into the 2nd year: applicants must have graduated from high school, be above the age of 18, have a score of 180 or higher on the New HSK Level 4.

(3) To transfer into the 3rd year: applicants must have graduated from high school, be above the age of 18, have a score of 180 or higher on the New HSK Level 5, and have at least 2 years of university coursework.



# ENGLISH-MEDIUM UNDERGRADUATE PROGRAMS



---

## COMPUTER SCIENCE AND TECHNOLOGY

---

### PROGRAM OVERVIEW

---

International students undertaking this program will:

- Master the fundamental knowledge and theoretical principles underpinning computer science;
- Acquire knowledge and operating processes of core technologies and hardware;
- Be made familiar with the latest frontier knowledge and emerging technologies in computer science;
- Be trained to develop their research skills, and the creative and practical application of research;
- Adopt professional, entrepreneurial and international perspectives in the application of their computer science skills and knowledge;
- Acquire, through theory and practice, cross-cultural literacy and, improved proficiency in English, and enhanced Chinese language skills.

---

### PROGRAM SPECIAL FEATURES

---

It is been accredited as a National Brand Program and a Guangdong Province Brand Program.

It has access to in-University Practicum Teaching Centers, including:

- SCUT-Tencent Guangdong Engineering Practicum Teaching Center;
  - SCUT-Microsoft Guangdong Engineering Practicum Teaching Center;
  - SCUT-Samsung Guangdong Engineering Practicum Teaching Center.
- It offers entrepreneurship courses in IT Business.

---

### MAIN COURSES

---

The core courses are:

- Calculus, Linear Algebra, Discrete Mathematics, Chinese Language, Introduction to Chinese Culture, Data Structure, Database, Program Design of High-level Language, Operating System, Principles of Compiling, Computer Network, Software Engineering, Artificial Intelligence.

---

### CAREER PROSPECTS

---

Graduates will possess the capabilities needed to work in industrial organizations, research departments, and computer hardware/software development organizations, and governmental departments. They will also be equipped to contribute in the areas of computing research, engineering development, and other related fields.

---

## INTERNATIONAL ECONOMICS AND TRADE

---

### PROGRAM OVERVIEW

---

International students undertaking this program will:

- Develop a systematic command of basic theories and tools of economics and management science;
- Understand the basic rules and operations of international trade, including the principles of international trade bodies such as the WTO;
- Understand computer applications for trade analysis and management;
- Acquire, through theory and practice, cross-cultural literacy and, improved proficiency in English, and enhanced Chinese language skills.

---

### PROGRAM SPECIAL FEATURES

---

- (1) It has its own International Business Laboratory.
- (2) It has an emphasis on an integration of Chinese and western economics theory and practice.

---

### MAIN COURSES

---

The core courses are:

- Microeconomics, Macroeconomics, Principles of Transnational Corporations Management, International Finance, Financial Management, Principles of Accounting, International Marketing, International Trade, Business Negotiation, Chinese Language, Introduction to Chinese Culture.

---

### CAREER PROSPECTS

---

Graduates are in high demand in fields of international business and economics, multinational enterprises, and governmental departments of economics, foreign trade companies, export-oriented enterprises and securities traders.

## ENVIRONMENTAL ENGINEERING

### PROGRAM OVERVIEW

International students undertaking this program will:

- Receive a thorough grounding in theoretical engineering and the application of those broad principles to practical research-based projects and/or industry-based projects;
- Develop professional capabilities to participate in and contribute to engineering project teams;
- Have a broad appreciation of and be able to specialize in water treatment engineering, air pollution control engineering, solid waste disposal and recycling, and biological technology;
- Acquire, through theory and practice, cross-cultural literacy and improved proficiency in English, and enhanced Chinese language skills.

### PROGRAM SPECIAL FEATURES

- (1) It is accredited as a Guangdong Province Brand Program.
- (2) It has its own Guangdong Provincial Environmental Engineering Experiment Teaching Demonstration Center.
- (3) It offers entrepreneurship courses in Environmental Industry.

### MAIN COURSES

The core courses are:

- Fluid Mechanics and Heat Transfer, Environmental Toxicology, Air Pollution Control Engineering, Environmental Monitoring, Solid Waste Treatment and Disposal, Environmental Engineering Microbiology, Water Pollution Control Engineering, Environmental Entrepreneurship Education, Chinese language, Introduction to Chinese Culture.

## CAREER PROSPECTS

Graduates will be able to apply their knowledge to environmental management and protection globally. They will possess the capabilities needed to work in industrial and mining enterprises, academic research institutions environmental protection departments and other government sectors.

## CIVIL ENGINEERING

### PROGRAM OVERVIEW

International students undertaking this program will:

- Receive a thorough grounding in theoretical civil engineering and the application of those broad principles to practical research-based projects and/or industry-based projects;
- Develop a creative/solutions-based approach to key civil engineering challenges;
- Gain insights into the practical application of theory and creativity to major civil engineering projects in the pearl river delta;
- Consolidate their multicultural communication, teamwork and management skills in the project team;
- Acquire, through theory and practice, cross-cultural literacy and improved proficiency in English, and enhanced Chinese language skills.

### PROGRAM SPECIAL FEATURES

The program is a national leader and has contributed to the economic development of south China, Hong Kong, Macau and Southeast Asia.

- (1) It is geared to the standards of the international civil engineering industry.
- (2) It is accredited as a Guangdong Province Brand Program.
- (3) It has its own Guangdong Provincial Civil Engineering Experiment Teaching Demonstration Center.
- (4) It offers entrepreneurship courses in Civil Engineering Industry.

## MAIN COURSES

The core courses are:

- Theoretical Mechanics, Mechanics of Materials, Structural Mechanics, Fluid Mechanics, Soil Mechanics, Theory of Concrete Structures, Theory of Steel Structures, Materials for Civil Engineering, Surveying, Civil Engineering Construction, Construction Project Management, Chinese language, and Introduction to Chinese Culture.

### CAREER PROSPECTS

Graduates will be equipped to contribute in the areas of civil engineering structure design, construction management, quality monitoring, technical consulting and infrastructure project planning.

## MATERIALS SCIENCE AND ENGINEERING

### PROGRAM OVERVIEW

International students undertaking this program will:

- Be provided with a consolidating foundation in natural science, materials science and engineering;
- Develop a sound grasp of the technologies of materials and devices design, manufacturing and testing, both in traditional industries and innovative high-tech industries;
- Master the theory and technical skills in the application of materials, and establish a solid foundation for further study and higher degrees;
- Advance their professional practices attitudes and skills, underpinned by a deep knowledge of related scientific theories, an innovative perspective and competence, a capacity for independent research and problem-solving, and consolidate an international competitive advantage based on enterprising spirit, and global vision;
- Acquire, through theory and practice, cross-cultural literacy and improved proficiency in English, and enhanced Chinese language skills.



---

## PROGRAM SPECIAL FEATURES

---

(1) It is a well-designed teaching and training system that combines experience from world class universities and the excellence of education based on Chinese Characteristics.

(2) It provides a deep and high quality focus on innovation in material science that is based on the essential theories of relationship between micro structure and performance of materials.

---

## MAIN COURSES

---

The core courses are:

- Analytic Chemistry, Inorganic Chemistry, Organic Chemistry, Physical Chemistry, Structural Chemistry, Solid Physics, Thermodynamics and Statistical Physics, Materials Mechanics, Fundamentals of Materials Science, Physical Properties of Materials, Modern Methods for Materials Characterization and Analysis, Materials Calculation and Simulation, Materials Selection and Design, Fundamentals of Materials Processing.

---

## CAREER PROSPECTS

---

Graduates will possess the capabilities needed to work both in traditional industries and innovative high-tech industries. They will also be equipped to establish a solid foundation for further study and higher degrees.

---

## ENGLISH-MEDIUM UNDERGRADUATE PROGRAM ADMISSION

---

---

### ADMISSION REQUIREMENTS

---

(1) High school graduate with good record or equivalent certificate. Those who have not graduated from high school, please submit a pre-graduation certificate, or a testimonial which shows your expected graduation time.

(2) Language requirements for English-Medium Programs (only for non-English speaking countries):

- TOEFL IBT 68 or above;
- IELTS 5.5 or above;
- Other equivalent English language qualifications.

(3) Applicants who seek exemption from submitting one of the above English Language competency certificates must show that they are

- A citizen or permanent resident of an English speaking country (including countries with English as the official language, common language or the Commonwealth member countries); and/or
- Have obtained their highest level of formal education from an institution where English is the medium of instruction and assessment and provide documented evidence of this when submitting their high school or college qualification certificate.

---

### TUITION

---

RMB 26,000 per academic year.

---

### APPLICATION DEADLINE

---

Before 30 June each year.



# ENGLISH-MEDIUM MASTER PROGRAMS (2 YEARS)

## ELECTRICAL AND COMPUTER ENGINEERING (ECE)

### PROGRAM OBJECTIVE

The objective of this program is to equip graduates, who seek a career in the Electrical and Computer Engineering (ECE), with in-depth knowledge in signal processing and control techniques for the design and development of electrical and computer control systems, both from software and hardware aspects. Students who pass all examinations and dissertation will be awarded a Master Degree in Engineering from South China University of Technology.

### PROGRAM SPECIALITY

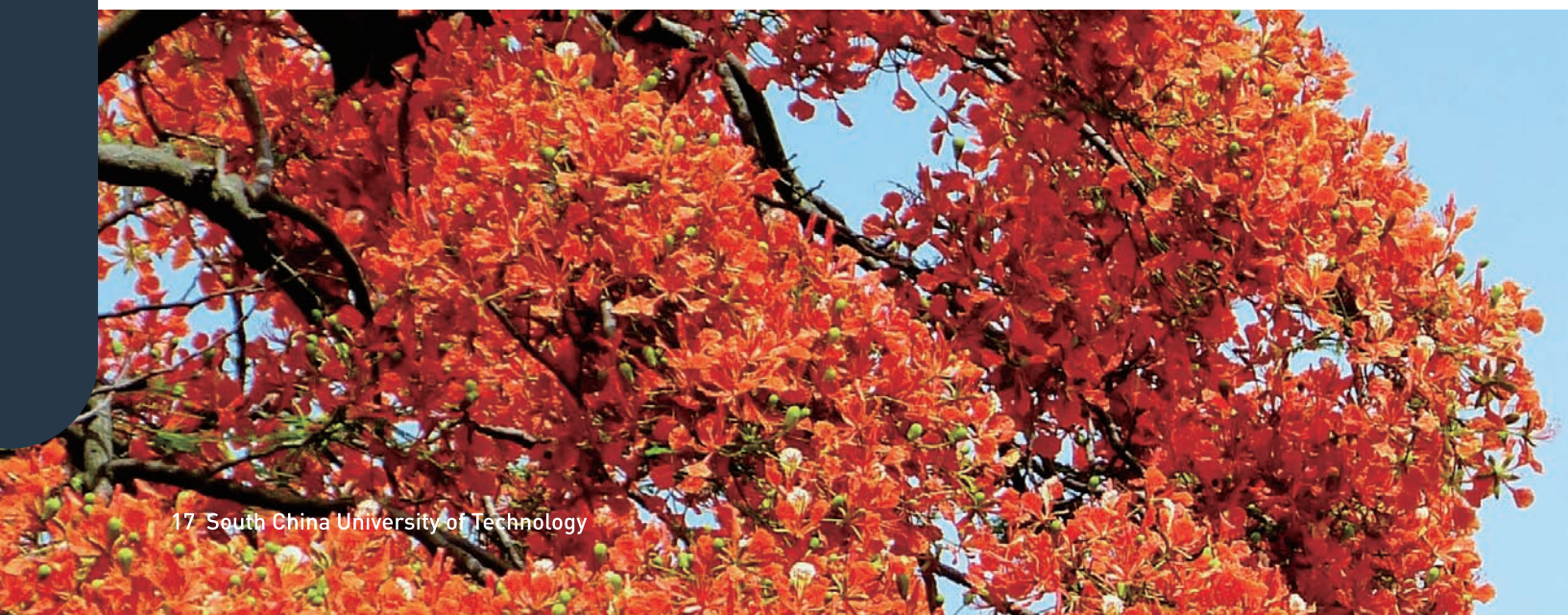
- (1) The first two-year English-medium master program in SCUT
- (2) Brand major for international students
- (3) First-class research environment
- (4) Joint Training programs with multinational enterprises

### CURRICULUM

	Course Title	Course Credit	Hours
Basic Courses	Basic Chinese	2	32
	Introduction to Chinese Culture	2	32
	Intercultural Communication	3	48
Compulsory Courses	Linear Systems	3	48
	Instrumentation and Sensors	3	48
	Digital Signal Processing	3	48
Elective Courses	Modeling and Simulation	2	32
	Embedded System Design	2	32
	Computer Control and Applications	2	32
	Robotics and Automation	2	32
	Machine Vision and Intelligent Systems	2	32
	Practice in Automation	4	64
	Practice in Digital Systems	4	64

### CAREER PROSPECTS

When you graduate, you're fully qualified in your chosen area, knowledgeable across the range of Electrical and Computer engineering, and able to apply new technologies in novel situations, giving you an advantage over engineering graduates from other more narrowly focused courses. Employment prospects are typically excellent, with 99 per cent of our students finding a job within six months of graduating.



# INFORMATION AND COMMUNICATION ENGINEERING (ICE)

## PROGRAM OBJECTIVE

This program aims at providing graduates of electronic and information engineering, electrical engineering, telecommunications engineering, computer science and other related disciplines an opportunity for further study at postgraduate level. Students will embark on a broad choice of core subjects in multimedia technologies, telecommunications and electronic engineering that enable them to meet new challenges and tap new opportunities in relevant fields. Students can also acquire the latest technical know-how by registering for specialized subjects in a chosen area that focuses on the cutting edge issues facing the engineering profession today. Students who have managerial responsibilities can take electives on business or management according to their interest and career needs.

## PROGRAM SPECIALITY

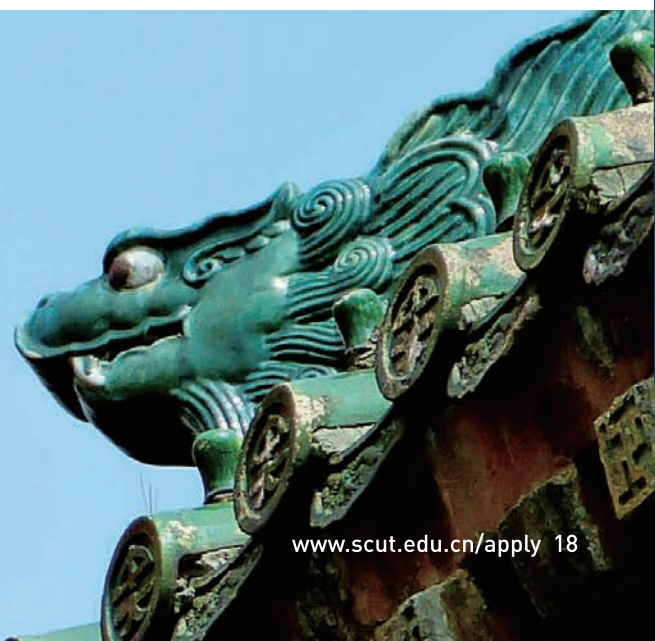
- (1) Key Discipline in SCUT
- (2) Group projects supported by professional laboratory
- (3) Industrial experience and exchange programmes
- (4) Distinguished alumni, such as TCL President Li Dongsheng

## CAREER PROSPECTS

Our graduates' knowledge and skills embody principles which will outlast today's technology, making them highly sought after by industry and commerce alike. For example, companies at our annual recruitment fair collectively seek to recruit more than our entire annual number of graduates.

## CURRICULUM

	Course Title	Course Credit	Hours
Compulsory Courses	Signal and System	3.0	48
	Chinese Culture	2.0	32
	Basic Chinese I	2.0	32
	Research on Current Issues of Intercultural Studies	3.0	48
	Theory of Communication Network System	3.0	48
Elective Courses	Digital Signal Processing	3.0	48
	Embedded System Design	2.0	32
	Practice of Embedded System Design	1.0	16
	Digital Image Processing	2.0	32
	Pattern Analysis and Machine Studies	2.0	32
	Practice of Pattern Analysis and Machine Studies	1.0	16
	Information Hiding and Information Investigating	2.0	32
	Design of Electronic System EDA	2.0	32



## SOFTWARE ENGINEERING

### PROGRAM OBJECTIVE

The objective of this program is to equip graduates seeking a career in Software Engineering (SE) with in-depth knowledge in software engineering, big data technologies, business intelligence, software development management and intelligent software. This program aims at training practice, international and inter-disciplinary engineering experts. Students who pass all examinations and dissertation will be awarded a Master's Degree of Engineering by South China University of Technology.

### PROGRAM SPECIALITY

- (1) Joint laboratory including SCUT-IBM joint lab, SCUT-Intel joint lab
- (2) International standard of curriculum system
- (3) 99% graduates found a job within three month
- (4) Software Engineering training base
- (5) Student innovation laboratory

### ADMISSION REQUIREMENTS

- (1) Bachelor's degree holder with the ability to pursue research in the candidate's proposed field of advanced study.
- (2) Applicants from non-English speaking countries are required to submit a TOEFL IBT 80; IELTS 6.0 or above. Applications from English speaking countries are required to submit a letter of English as medium of instruction issued by graduated universities or educational institutes.
- (3) Two recommendation letters from Professors or Employers.
- (4) Study Plan/Personal Statement.
- (5) The pre-acceptance letter issued by supervisors

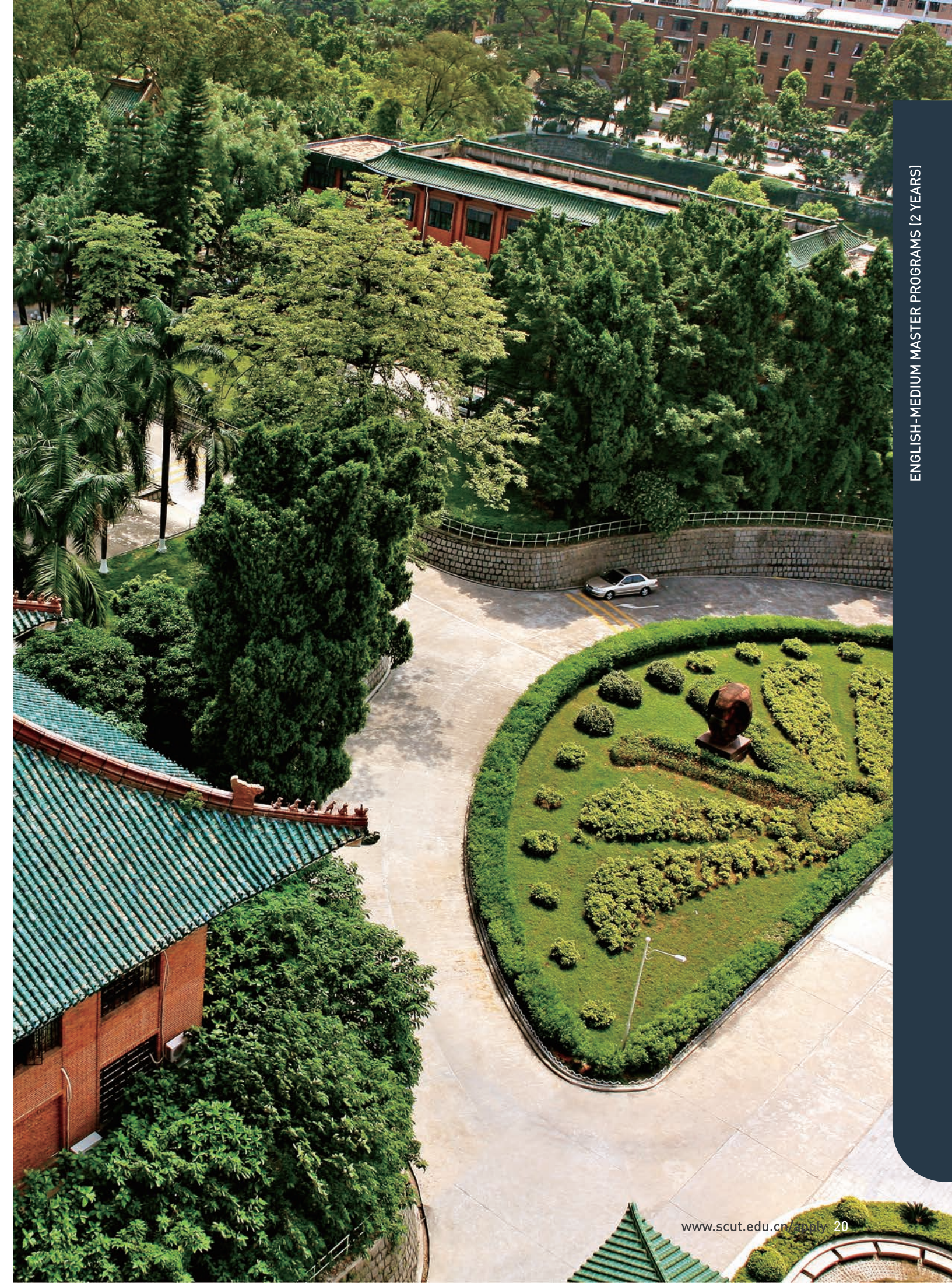
## CURRICULUM

	Course Title	Course Credit	Hours
Basic Courses	Basic Chinese	2.0	32
	Introduction to Chinese Culture	2.0	32
	Intercultural Communication	3.0	48
Compulsory Courses	IT Project Management	3.0	48
	Operating Systems	3.0	48
	Software Testing	3.0	48
Elective Courses	Advanced Database Technology	2.0	32
	Information Retrieval	2.0	32
	Artificial Intelligence	2.0	32
	Deep Learning	2.0	32
	Advanced Topics in Software Engineering	3.0	48

### CAREER PROSPECTS

About 85% of our students go on to work in the IT industry. Many graduates have founded successful companies while others have easily found employment in software, hardware, the games industry finance, communication and commerce.





ENGLISH-MEDIUM MASTER PROGRAMS (2 YEARS)

# ENGLISH-MEDIUM PH.D PROGRAMS (3 YEARS)

## SUGAR ENGINEERING

### OBJECTIVES

This program aims to graduate high-level personnel who are equipped with solid yet broad theoretical foundation in the discipline by providing profoundly systematic academic knowledge and proficient practical skills. After completion of the program, graduates will possess a deep understanding of developing trends both at home and abroad; will have a good command of research frontier issues including international sugar biology, sugar pharmaceuticals, carbohydrates functional materials, and green processing technologies of sugar products; will have obtained the confidence necessary to undertake scientific research projects and independently solve complex engineering problems; and, be able to make creative achievements in the field of sugar engineering technology. Students are expected to be competent to engage in relevant teaching, scientific research, technology development, and to exhibit moral, intellectual and physical development in job management.

### MAIN RESEARCH FIELDS

- Sugar Biotechnology and Safety
- Preparation of Sugar Medicine
- Green Processing of Carbohydrate
- Functional Carbohydrate

### MAIN COURSES

Progress of Sugar Engineering, Theory of Solution Process, Basic Science and Engineering of Carbohydrates, Sugar Biological Engineering

## FOOD SCIENCE AND ENGINEERING

### OBJECTIVES

The program aims to cultivate high-level specialized personnel who are strong in the ideals of patriotism, observance of the law, and discipline; who exhibit moral, intellectual and physical characteristics; who are noble, have a rigorous style of study, strong dedication to career, and a healthy spirit of teamwork. Students are required to demonstrate a solid yet broad understanding of basic theories, combined with a systematically thorough academic awareness. The abilities necessary to independently undertake scientific research and make creative achievements in scientific and specialized technical fields will be demonstrable.

### MAIN RESEARCH FIELDS

- Food Chemistry
- Food Biotechnology
- Food Engineering
- New Technology of Food Greening Processing

### MAIN COURSES

Progress of Food Engineering, Food Material, Food Biology Technology, Modern Food Nutrition, Bio-active Substances Engineering, Food Biology Technology, Modern Food Analysis Technology, Deep-Processing Theory and Technology of Agricultural and Aquatic Products, Professional English of Food Science

## INFORMATION AND COMMUNICATION ENGINEERING

### OBJECTIVES

The processing of data and signals digitally together with the communication of such information over fixed and wireless links is of major importance in many aspects of modern engineering. This course will provide you with a good understanding of digital signal processing, radio systems and digital communications together with topics covering real time implementation of the signal processing techniques. The theoretical aspects of the course will be reinforced with extensive 'hands-on' exercises.

### MAIN RESEARCH FIELDS

- Theory of Communication and network technology
- Ultrasonic Detecting and imaging
- Image Processing and video processing
- Theory and technology of signal and information processing

## COMPUTER SCIENCE AND TECHNOLOGY

### OBJECTIVES

The aim of this program is to cultivate advanced science and technology professionals who support the leadership of the Communist Party of China, support the socialist system and love the motherland's moral, intellectual and physical development. The student should learn the knowledge of theories, techniques and methods in the computer science and technology. They should also master a foreign language to write research papers and communicate with others. The graduate should be able to do job related to teaching, research and management in universities, scientific research Units, and government departments.

### MAIN RESEARCH FIELDS

- Computing intelligence and pattern recognition
- Multimedia technology
- The system structure and high performance computing
- Intelligent software and robots

## MATERIAL SCIENCE AND ENGINEERING

### OBJECTIVES

This program aims to cultivate high-level specialized personnel who have solid and broad theoretical basis and systematic, in-depth professional knowledge of materials processing; who are well-informed with the developing trends of material science and engineering and have a command of necessary experimental and computer skills; who have the abilities of conducting scientific researches or solve complex engineering problems independently; who are proficient in a foreign language and computer application skills; who are able make creative achievements in the field of materials processing engineering. Students are expected to become perfect personnel in related research institutions, institutions of higher learning or production departments with good moral character and humane accomplishment.

### MAIN RESEARCH FIELDS

- Polymeric Materials
- Inorganic Materials
- Metallic Materials

## CONTROL SCIENCE AND ENGINEERING

### OBJECTIVES

The objective of this program is to equip graduates, who seek a career in the Control Science and Technology, with in-depth knowledge in signal processing and control techniques for the design and development of electrical and computer control systems, both from software and hardware aspects. Students who pass all examinations and dissertation will be awarded a Master Degree of Engineering by South China University of Technology.

### MAIN RESEARCH FIELDS

- Control Theory and Control Engineering
- Measurement Technology and Automatic Equipment
- System Engineering
- Pattern Recognition and Intelligent System

## ENVIRONMENTAL SCIENCE AND ENGINEERING

### OBJECTIVES

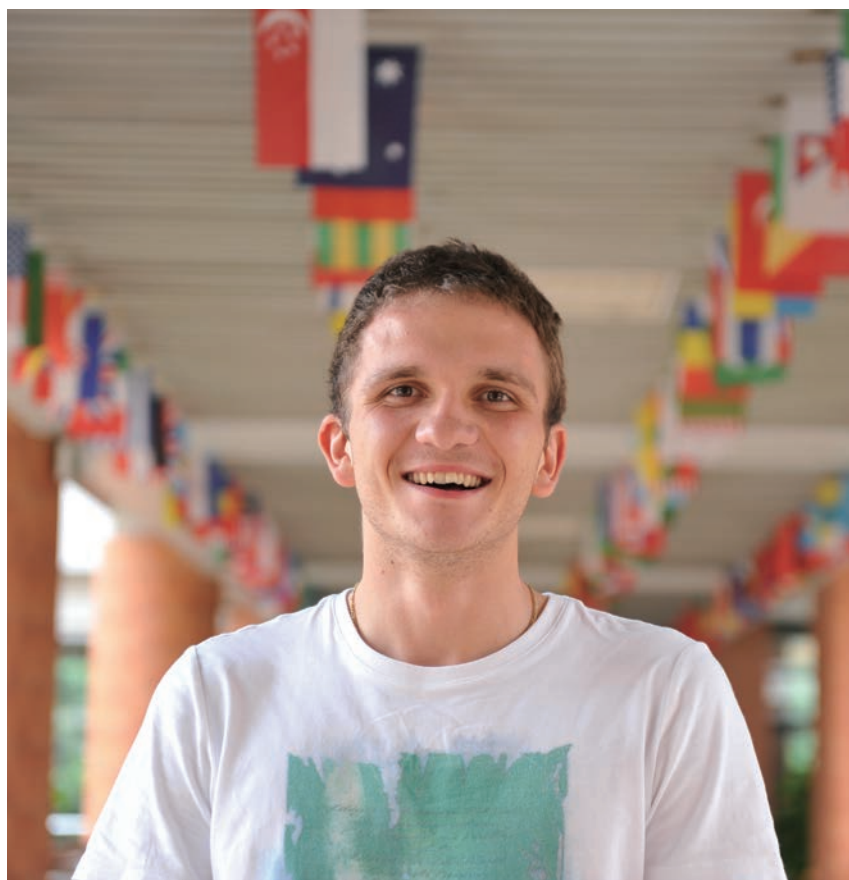
This program aims to cultivate high-level specialized personnel who are equipped with solid fundamental theory, systematic professional understanding and experimental operation skills; who are able to put theory into practice and conduct innovative research; who are informed in the research and development of frontier issues in the field of environmental science or engineering and with advanced technical methods and modern technical approaches to solving problems of environmental science; who have the awareness of bringing new ideas and are able to put forward creative research question. Graduates are expected to be able to undertake jobs of scientific researches, teaching, and management in the field of environment Science and engineering. In regard to the advanced energy materials and technologies direction, we aim to cultivate personnel who will be equipped with solid background knowledge of electro-chemistry, photo-electro catalysis, materials science and engineering and well-trained in design, preparation, characterization of advanced materials for fuel cells (SOFC, PEMFC), photovoltaic, photo-electro catalysis, super capacitors lithium-ion battery, etc. Candidates are expected to be able to perform at high level in energy related positions, including but not limited to R&D scientist/engineer, CTO, sales manager, teacher, government policy adviser.

### MAIN RESEARCH FIELDS

- Water pollution control and water purification
- Air pollution control
- Solid waste treatment and reclamation
- Ecology system remediation
- Industrial wastewater pollution control
- Marine environment
- Energy materials and techniques

### ADMISSION REQUIREMENTS

- (1) Master's degree holder with the ability to pursue research in the candidate's proposed field of advanced study.
- (2) Applicants from non-English speaking countries are required to submit a TOEFL IBT 80; IELTS 6.0 or above. Applications from English speaking countries are required to submit a letter of English as medium of instruction issued by graduated universities or education institutes.
- (3) Two recommendation letters from Professors or Employers.
- (4) Study Plan/Personal Statement.
- (5) The pre-acceptance letter issued by supervisors







# INTERNATIONAL FOUNDATION PROGRAM (1 YEAR)

## PROGRAM OVERVIEW

The International Foundation Program offered by South China University of Technology is designed to prepare international students to operate in a university setting by familiarizing them with the requirements needed to succeed as an undergraduate student. The program is suited for those who do not meet the minimum requirements for direct entry into SCUT's undergraduate programs. All courses are conducted in English by SCUT lecturers and by experienced English-speaking instructors. Students are guaranteed admission to English-taught undergraduate degree programs at SCUT if they successfully complete the program. Students can also apply for Chinese-taught degree programs if they meet the basic Chinese language requirements. Upon successful completion of the program, a certificate recognized by other higher education institutions will be awarded.

## MAIN COURSES

Mathematics, Physics, English, Basic Chinese, Management, Introduction to Computer Science.

## ADMISSION REQUIREMENTS

(1) "O-Level" Certificate and results, or a letter from your current school which shows that you have successfully completed two years of high school.  
(2) English test results: Applicants from non-English speaking countries are required to submit a TOEFL score of 50 or IELTS 5.0, or pass SCUT's placement test.

## TUITION

RMB 18,000 per academic year

# NON-DEGREE PROGRAMS OF CHINESE LANGUAGE AND CULTURE

## GENERAL CHINESE PROGRAM

GENERAL CHINESE  
PROGRAMS ARE  
DIVIDED INTO THREE  
LEVELS

Basic, Intermediate, and Advance

### DURATION

Long-Term: 1 semester or 1  
academic year (Each academic  
year has two semesters).;  
Short-Term: 1-2 months  
(Applicants can choose an  
appropriate course level  
according to their Chinese  
language proficiency).

### ACTIVITIES:

Inner city tours to historical sites.

### APPLICATION

#### DEADLINE:

- Fall Semester: 15 July
- Spring Semester: 15 January.

### TUITION

- One semester: RMB 8, 500,
- One year: RMB 16,200



	Expected Result	Main Courses	Optional Courses
Basic	Students are expected to know basic phonetic and tones, and use about 3,000 words and 1,600 Chinese characters. At the end of the course, students should have a basic command in listening, speaking, reading, and writing which meets the needs of daily living and study.	Basic Chinese, Basic Listening, Speaking, and Reading, other optional courses	Chinese Characters, Cantonese, Scientific Chinese, Chinese Culture, Kong Fu, Calligraphy, HSK Preparation
Intermediate	Students will be able to use about 5,200 words and about 2,200 Chinese characters. At the end of the course students should have a good command in listening, speaking, reading, and writing, and can deal with undergraduate courses.	Intermediate Listening, Speaking, Reading, Basic Writing in Chinese, Business Chinese, Newspaper Reading, Website News? Reading;	
Advanced	Students will be able to use about 7,000 words and 4,000 Chinese characters. Students should be able to listen to Chinese radio programs, read Chinese newspapers, and deal with postgraduate study in Chinese. The language skills will enable students to be fully involved in social and work activities such as tourism and business.	Advanced Chinese, Advanced Listening, Speaking, Reading, Applied Chinese Writing, Grammar of Modern Chinese, Chinese Culture, Cantonese, Business Chinese, Modern Chinese Lexicon, Chinese Rhetoric, Literature Conspectus, Chinese movies, other optional courses	

## INTENSIVE CHINESE PROGRAM

### PROGRAM OVERVIEW

The Intensive Chinese Language Program is designed for the international students who need to improve their Chinese language proficiency in a short period of time. The program focuses on improving students' comprehensive Chinese knowledge and skills, including listening, speaking, reading, and writing. With the completion of this one-year program, students should have a good command of using Chinese language to conduct deeper communication and discussion, as well as achieving a greater proficiency of Chinese language than that of others to successfully engage in major studies.

### MAIN COURSES AND CURRICULUM

30 teaching hours per week;

● **Compulsory:**

Basic Comprehensive Chinese (Listening, Reading & Writing, Speaking; Improved Comprehensive Chinese (Listening, Conversation, etc.); Academic Chinese

● **Optional:**

Basic/Intermediate Scientific Chinese; Basic / Intermediate IT Chinese; HSK Preparation; Chinese Movie Appreciation; Chinese Songs; Chinese Kong Fu or Calligraphy, etc.

### PROGRAM DURATION AND SEMESTERS

The Intensive Chinese Language Program is a one-year program, consists of two semesters. The Fall semester starts from early September while the Spring semester starts from the end of February. The exact dates subject to the admission notice.

### COURSE HIGHLIGHTS

- (1) Courses are intensive.
- (2) Teaching speed is going fast.
- (3) Proficiency of language is improving fast.

### APPLICATION DEADLINE

- Fall Semester: 15 July
- Spring Semester: 15 January.

### TUITION

RMB 18,200 per year, RMB 10,000 per semester.

### ELIGIBILITY

- (1) The Intensive Chinese Program is only applicable to the beginner; For those who have basic Chinese, please apply for General Chinese Program.
- (2) All applicants without HSK result who apply for degree program are required to attend this program prior to their degree studies;

# INTERNATIONAL SUMMER CAMP PROGRAM WITH CREDITS

## PROGRAM OVERVIEW

SCUT has been organizing summer camp program in Chinese language and culture for over ten years. The summer camp program has been developed specifically with international students who are interested in learning or increasing their knowledge of Chinese language, culture and history. Through a series of class teaching and activities, participants will be able to conduct usual communication by using Chinese or English language and gain with a greater understanding of China, its people and history. SCUT has provided the training classes for over thousand international students from all over the world.

## COURSES

### Courses I: Chinese Language and Culture (2 Credits)

Courses on entry and intermediate levels

- Chinese courses are mainly comprised of Chinese Comprehension, Conversation, and Reading; 12 hours per week
- Culture courses and activities include: Contemporary Chinese Economy, Chinese Culture, Chinese History and Geography, Chinese Calligraphy, Taiji and Chinese Kong-fu, etc; 4 hours per week
- 2-3 visits to the local companies and inner city tour

### Courses II: Understanding China (2 Credits)

- 8 lectures in English or Chinese medium
- 8 hours per week Chinese language and culture exploration
- 2-3 visits to the local companies and inner city tour

#### 1. Economic and Business

Topic 1: Introduction to Chinese Economy

Topic 2: The next China and the Global Economy

Topic 3: Chinese Business and Society in Modern China: An Institutional Perspective

Topic 4: Multi-national Company Management in China

#### 2. Electronic Business

Topic 1: Introduction to Chinese Electronic Business

Topic 2: Electronic Business Security

Topic 3: Chain Management in Chinese Market

Topic 4: Internet Finance Development in China

#### 3. International Relations

Topic 1: The rise of China and Change in World Politics

Topic 2: The China Factor- Managing China's Global Challenges

Topic 3: Chinese Government and Politics

Topic 4: China's Public Policy

- The actual lectures delivered are subject to change.
- Different types of programs can be designed to cater to the students' different interests.

## SCHEDULE

(1) The International Summer Camp Program will last for 3 weeks, starting from 16th July to 3th Aug 2018;

Application deadline: 30th June.

(2) Group applications are welcome; Programs can be tailored to the specific students interests.

\* Exact dates are subject to Admission Notice.

## COURSE HIGHLIGHTS

(1) Provide credit courses in English or Chinese medium for the college students.

(2) Plentiful and practical knowledge with lectures on hot topics.

(3) Combination of Chinese language study and local cultural experience.

## FEES

- Tuition: RMB 2,800 (Course I) and RMB 4500 (Course II);
- Accommodation: RMB 1,000 (Air-conditioned Double Room)

## APPLICATION MATERIALS

The applicants must first apply on the website: [www.scut.edu.cn/apply](http://www.scut.edu.cn/apply), fill the application form and upload the scan copy of your passport (photo page).

## COMPLETION

Upon completion of the program, the participants will be awarded a certificate.



圖書館

1998.09.14 2008.09.14

# CHINESE-MEDIUM DEGREE PROGRAMS

## UNDERGRADUATE PROGRAMS WUSHAN CAMPUS (TIANHE DISTRICT)

(4 years, Architecture Related Majors:5 years)

### School of Mechanical and Automotive Engineering

- Mechanical Engineering
- Mechatronic Engineering
- Vehicle Engineering
- Process Equipment and Control Engineering
- Safety Engineering
- Materials Molding and Control Engineering

#### Core Curriculum:

- Engineering Thermodynamics, Mechanical Principles, Mechanical Design, Fundamentals of Mechanical Manufacturing, Engineering Mechanics, Fundamentals of Mechanical Designing, Fluid Mechanics and Heat Transfer, Automatic Control Theory

### School of Architecture (5 years)

- Architecture
- Urban and Rural Planning
- Landscape Architecture

#### Core Curriculum:

- Architectural Design, Principles of Architectural Design, Fundamentals of Architectural Design, Fine Arts, History of Chinese Architecture, History of Western Architecture, Computer-Aided Design

### School of Civil Engineering and Transportation

- Civil Engineering (Chinese Medium)
- Civil Engineering (English Medium)
- Construction Management
- Traffic Engineering
- Transportation
- Naval Architecture and Ocean Engineering
- Hydraulic and Hydropower Engineering

#### Core Curriculum:

- Theoretical Mechanics, Fluid Mechanics, Civil Engineering Construction, Project Management in Civil Engineering, Transport Planning, Engineering Hydrology

### School of Electric Power

- Electrical Engineering and Automation
- Energy and Power Engineering
- Nuclear Engineering and Technology

#### Core Curriculum:

- Engineering Thermodynamics, Heat Transfer Theory, Principles of Turbine, Fundamentals of Mechanical Designing, Circuit, Visual Basic Program Design

### School of Electronic and Information Engineering

- Information Engineering
- Electronic Science and Technology

#### Core Curriculum:

- Circuit, Analog Electronic Technology, Digital Electronic Technology, Signal and System, Microcomputer System and Interface, Digital Signal Processing, Telecommunication Circuit, Elements of Information Theory

### School of Materials Science and Engineering

- Polymer Materials and Engineering
- Biomedical Engineering
- Opto-electronics Information Science and Engineering (Opto-electronic Device)
- Materials Science and Engineering (Chinese Medium)
- Materials Science and Engineering (English Medium)
- Materials Chemistry
- Electronic Science and Technology (Electronic Materials and Device)

#### Core Curriculum:

- Introduction to Materials Science and Engineering, Fundamentals of Materials Science, Solid Physics, Thin Film Physics and Technology, Optoelectronic Materials and Devices

---

### School of Chemistry and Chemical Engineering

- Chemical Engineering and Technology
  - Applied Chemistry
  - Energy Chemical Engineering
  - Pharmaceutical Engineering
- 

#### Core Curriculum:

- Physical Chemistry, Organic Chemistry, Inorganic Chemistry, Organic Chemistry Experiment, Biological Chemistry, Chemical Reaction Engineering, Chemical Engineering Thermodynamics, Chemical Engineering Design, Automatic Control Technology and Theory, Petroleum Processing
- 

---

### School of Automation Science and Engineering

- Automation
  - Intelligence Science and Technology
- 

#### Core Curriculum:

- Analog Electronic Technology, Digital Electronic Technology, Power Electronic Technology, Introduction to Intelligent Control, Computer Network and Telecommunication
- 

---

### School of Food Science and Engineering

- Food Science and Engineering
  - Food Quality and Safety
- 

#### Core Curriculum:

- Food Analysis, Principles of Food Processing and Storage, Food Chemistry
- 

---

### School of Mathematics

- Mathematics and Applied Mathematics
  - Information and Computing Science
  - Information Management and information System
- 

#### Core Curriculum:

- Mathematical Analysis, Advanced Algebra, Principles of Probability, Mathematical Statistics, Data Structure
- 

---

### School of Physics and Optoelectronics Technology

- Applied Physics
  - Opto-electronics Information Science and Engineering (Opto-electronic Information)
- 

#### Core Curriculum:

- Fundamental Physics, Quantum Mechanics, Electrodynamics, Thermodynamics and Statistical Physics, Circuit and Analog Electronic Technology, Digital Electronic Technology, Solid Physics, Computational Physics, Mathematical Physics Equation, Semiconductor Physics and Device, Optics, Optical Information and Photoelectronics, Elements of Information Theory, Signal and System, Digital Signal Processing, Principle of Communication, Data Structure
- 

---

### School of Public Administration

- Administrative Management
- 

#### Core Curriculum:

- Principles of Management, Principles of Political Science, Administration Science, Western Economics, Economics of Public Sectors, Public Policy Analysis, Public Human Resource Management, Organization Behavior
- 

---

### School of Physical Education

- Sports Training
- 

#### Core Curriculum:

- Sports Anatomy, Athletic Physiology, Athletic Training, Athletic Psychology, Sport Biomechanics, Sports Medicine, Sports Scientific Research Methods, Special Teaching Theory and Practice of Training, General Teaching Theory and Practice of Training
- 

---

### School of Foreign Languages

- Business English
  - Japanese
- 

#### Core Curriculum:

- Basic English, Advanced English, Translation Theory and Skills, Interpretation, Selected Readings in British Literature, Selected Readings in American Literature, English Listening Comprehension, English Reading, English Writing, English Speaking, Basic Japanese, Advanced Japanese, Chinese-Japanese Translation, Chinese-Japanese Interpretation, Selected Readings of Japanese Literature, Japanese Reading, Japanese Listening Comprehension, Japanese Writing, Japanese Speaking
- 

---

### School of Business Administration

- Business Administration
  - Accounting
- 

#### Core Curriculum:

- Micro-Economics, Macro-Economics, Principles of Management, Accounting, Principles of Marketing, Organization Behavior, Human Resource Management, Financial Management, Statistics for Management, Operations Research, Basic Accounting, Intermediate Financial Accounting, Advanced Financial Accounting, Cost Accounting, Management Accounting, Auditing, Accounting Information System, International Accounting
- 

---

### School of Light Industry and Engineering

- Light Chemical Engineering
  - Resources and Environment Science
- 

#### Core Curriculum:

- Principles of Chemical Engineering, Organic Chemistry, Microbiology
-

# UNDERGRADUATE PROGRAMS UNIVERSITY TOWN CAMPUS (PANYU DISTRICT)

## School of Computer Science and Engineering

- Computer Science and Technology (Chinese Medium)
- Computer Science and Technology (English Medium)
- Network Engineering
- Information Security

### Core Curriculum:

- Advanced Language Program Design, Data Structure, Introduction to Computer Science, Database, Digital Logic, Discrete Mathematics

## School of Software Engineering

- Software Engineering

### Core Curriculum:

- Introduction to Computer and Software Engineering, Discrete Mathematics, Digital Logic, Data Structure and Algorithm, Operating System, Compiling Technology, Computer Network, Database System, Software Architecture, Software Testing and Maintenance

## School of Environment and Energy

- Environmental Science
- Water Science and Engineering
- Environmental Engineering (Chinese Medium)
- Environmental Engineering (English Medium)

### Core Curriculum:

- Environmental Monitoring

## School of Biology and Biological Engineering

- Biotechnology
- Bioengineering Specialty
- Biopharmaceutics

### Core Curriculum:

- Organic Chemistry, Biochemistry and Molecular Biology, Modern Biochemical Technology, Inorganic Chemistry, Analytical Chemistry

## School of Journalism and Communication

- Journalism
- Communication Studies
- Advertising

### Core Curriculum:

- Fundamentals of Journalism, Network communication, Audiovisual Production, Principles of Advertising, Basic Photography, Basic Cinematography, Introduction to Mass Media, Introduction to Brandology, Integrated Marketing Communication, Public Relations, Survey and Statistical Analysis, Brand Strategy Management, Classical Brand Cases (Bilingual), Consumer Behaviors Research (Bilingual)

## School of Law (School of Intellectual Property)

- Law
- Intellectual Property

### Core Curriculum:

- Introduction to Jurisprudence, Professional Ethics of Law, Legal Logic, Nomology, Constitution, Generality of Criminal Law, Generality of Civil Law, Business Law, Economic Law, Intellectual Property Law

## School of Design

- Industrial Design
- Environmental Design
- Product Design
- Fashion and Accessories Design

### Core Curriculum:

- Design Sketch, Chromatics, Introduction to Industrial Design, History of Industry Design, Presentation Technology, Methodology for Product and Process Design, Industrial Design, Engineering Fundamentals, Basis of Design, Introduction to Design, History of Design

## School of Arts

- Musicology
- Dancology
- Music Performance

### Core Curriculum:

- Solfeggio, Harmony, Musical Form and Works Analysis, Introduction to Music, History of Chinese Music, History of Western Music

## School of Economics and Commerce

- Economics
- Electronic Business
- Logistics Engineering
- Tourism Management
- Economics and Management of Convention and Exhibition
- Finance
- International Economics and Trade (Chinese Medium)
- International Economics and Trade (English Medium)

### Core Curriculum:

- Macro-Economics, Micro-Economics, Principles of Economics, Finance, Principles of Management



## School of International Education

- Teaching Chinese to Speakers of Other Language

### Core Curriculum:

- Elementary Chinese, Intermediate Chinese, Advanced Chinese, Chinese Speaking, Chinese Reading, Chinese Listening Comprehension, Academic Writing, Introduction to Chinese Culture, Business Chinese



## ADMISSION REQUIREMENTS

(1) Graduated from High school graduate with good record or equivalent certificate. Those who have not graduated from high school should submit a pre-graduation certificate, or a testimonial which shows your expected graduation time.

(2) Language requirements for Chinese-Medium Programs:

New valid HSK Level 4 with scores above 180 for Science or Engineering studies;

New valid HSK Level 5 with scores above 180 for Liberal Arts, Economics, Management Studies, or Arts & Design.

(3) Language requirements for English-Medium Programs (only for non-English speaking countries):

- TOEFL IBT 68 or above;
- IELTS 5.5 or above;
- Other equivalent English language qualifications.

(4) Applicants who seek exemption from submitting one of the above English Language competency certificates must show that they are

- a citizen or permanent resident of an English speaking country; and/or have
- obtained their highest level of formal education from an institution where English is the medium of instruction and assessment and provide documented evidence of this when submitting their high school or college qualification certificate.

(5) Those who do not have a valid HSK certificate can study in the Chinese Language program at SCUT prior to their degree programs until the required certificate has been completed.

(6) To apply for music related programs, please submit a DVD or CD of your live performance. To apply for architecture related programs, please submit a portrait and a still life you have drawn. For design related programs, please submit two original designs.

(7) Those who have not tested for HSK, IELTS or TOEFL in the application year can apply to attend the Language Proficiency Test held by the School of International Education, SCUT. Students' test scores will be considered in the admission process.

(8) Applications for changing majors could be accepted within two weeks after the semester begins.

## APPLICATION DEADLINE

- Before 30 June each year

## STUDY STARTING TIME

- September each year

## Notes

The names of majors and schools and their affiliations are subject to SCUT's latest documents.

# MASTER PROGRAMS

## WUSHAN CAMPUS(TIANHE DISTRICT)

(2 or 3 Years)

In 2018, South China University of Technology will open applications for the Academic Master's Degree to international students. The Academic Master's Degree is offered in 103 majors from 9 disciplines. The Academic Master's Degree is established in accordance with a traditional discipline curriculum including Philosophy, Economics, Law, Education, Literature, Science, Engineering and Administration.

### School of Mechanical and Automotive Engineering

- Mechanical Engineering
- Material Science and Engineering
- Chemical Process Equipment
- Power Machinery and Engineering
- Safety Science and Engineering

### School of Architecture

- Architectural History and Theory
- Architectural Design and Theory
- Architectural Technology and Science
- Landscape Architectonics
- Study of Urban and Rural Planning

### School of Civil and Transportation Engineering

- Civil Engineering
- Mechanics
- Shipping and Oceanic Engineering
- Hydraulic Engineering
- Highway and Railway Engineering
- Traffic Information Engineering and Control
- Transportation Planning and Management

### School of Electric Power

- Engineering Thermophysics
- Power System and its Automation
- Power Electronics and Power Drives
- Electric Machines and Electric Apparatus
- Theory and New Technology of Electrical Engineering
- High Voltage and Insulation Technology
- Nuclear Power and Thermal Power Engineering

### School of Electronic and Information Engineering

- Circuits and Systems
- Microelectronics and Solid State Electronics
- Communication and Information Systems
- Signal and Information Processing
- Electromagnetic Field and Microwave Technology
- Information and Communication Engineering (English Medium, 2 years)

### School of Automation Science and Engineering

- Control Science and Engineering
- Electrical Computer and Engineering (English Medium, 2 years)

### School of Materials Science and Engineering

- Chemistry and Physics of Polymers
- Microelectronics and Solid State Electronics
- Biomedical Engineering
- Material Science and Engineering

### School of Chemistry and Chemical Engineering

- Inorganic Chemistry
- Analytical Chemistry
- Physical Chemistry
- Organic Chemistry
- Chemical Engineering
- Industrial Catalysis
- Applied Chemistry
- Chemical Technology
- Energy Environmental Material and Technology
- Biochemical Engineering

### School of Light Science and Engineering

- Pulp and Paper Engineering
- Biomass Science and Engineering

### School of Food Science and Engineering

- Sugar Engineering
- Food Science and Engineering




---

### School of Mathematics

- Fundamental Mathematics
  - Computational Mathematics
  - Probability and Mathematical Statistics
  - Applied Mathematics
  - Operational Research and Cybernetics
- 

---

### School of Physics and Optoelectronics

- Condensed Matter Physics
  - Theoretical Physics
  - Optics
  - Acoustics
  - Physical Electronics
- 

---

### School of Business Administration

- Management Science and Engineering
  - Accounting
  - Corporate Management
  - Technological Economics and Management
- 

---

### School of Public Administration

- Administration Management
  - Educational Economics and Management
  - Land Resource Management
  - Education
  - Social Security
- 

---

### School of Marxist Theory

- Sinicization of Marxism Research
  - Basic Principles of Marxism
  - Education in Ideological and Political
  - Studies of Basic Issues in the Chinese Modern and Contemporary History
- 

---

### School of Foreign Languages

- Foreign Language and Literature
- 

---

### School of Physical Education

- Physical Education
- 

---

### School of Business Administration - MBA Center

- MBA (Chinese Medium, 2 years)
-

# MASTER PROGRAMS UNIVERSITY TOWN CAMPUS (PANYU DISTRICT)

## School of Computer Science and Engineering

- Computer Science and Technology
- Security in Cyberspace

## School of Software Engineering

- Software Engineering (Chinese Medium, 3 years / English Medium, 2 years)

## School of Environment and Energy

- Environmental Science and Engineering
- Green energetic Chemistry and Technology

## School of Biology and Biological Engineering

- Fermentation Engineering
- Biology

## School of Journalism and Communication

- Journalism and Communication (Chinese Teaching and Communication)

## School of Economics and Commerce

- Regional Economics
- Finance
- Industrial Economics
- International Trade
- Quantitative Economics
- Management Science and Engineering
- Tourism Management

## School of Design

- Design Studies (Master in Engineering)
- Design Studies (Master in Arts)

## School of Law (School of Intellectual Property)

- Legal Theory
- International Public Law
- Constitution Law and Administrative Law
- Criminal Jurisprudence
- Science of Economic Law
- Civil Law and Commercial Law
- Science of Procedure Laws
- Intellectual Property

## School of Arts

- Music and Dancology



---

## ADMISSION REQUIREMENTS

---

- (1) Bachelor's degree diploma and transcripts with good record.
- (2) Language requirements for Chinese-Medium Programs:
  - New HSK Band 4 with scores above 180 for Science or Engineering studies;
  - New HSK Band 5 with scores above 180 for Liberal Arts, Economics, or Management Studies;
  - New HSK Band 5 with scores above 210 for Journalism and Communication (Chinese Teaching and Communication)
- (3) Language requirements for English-Medium Programs (only for non-English speaking countries):
  - TOEFL IBT 80 or above;
  - IELTS 6.0 or above;
- (4) Those students who are exempt from submitting an English Language Certificate must meet the following conditions:
  - Is a citizen of an English speaking country;
  - Obtained the highest level degree of education from an institution operating in English and submitting a proof of English instruction;
- (5) Those who do not have an HSK certificate can study in the Chinese Language program at SCUT prior to their degree programs until the required certificate has been completed.
- (6) To apply for music related programs, please submit a DVD or CD of your live performance. To apply for architecture related programs, please submit a portrait and a still life you have drawn. For design related programs, please submit two original designs.
- (7) Two recommendation letters from professors or associate professors.
- (8) A pre-acceptance letter of supervisor issued by SCUT professors or associate professors.
- (9) A study or research plan in Chinese or in English (Chinese or English, no less than 500 words).
- (10) For MBA applicants, students are required to have graduated with a bachelor's degree at least two years prior to the application, and pass an MBA center interview.
- (11) Those who have not tested for HSK, IELTS or TOEFL in the application year can apply to attend the Language Proficiency Test held by the School of International Education, SCUT. Students' test scores will be considered in the admission process.
- (12) Applications for changing majors will not be accepted two weeks after the semester begins.

---

## APPLICATION DEADLINE

---

- Before 30 June each year

---

## STUDY STARTING TIME

---

- September of each year

---

## Notes

---

The names of majors and schools and their affiliations are subject to SCUT's latest documents.



# PH.D PROGRAMS

## WUSHAN CAMPUS (TIANHE DISTRICT)

(3 Years)

### School of Mechanical and Automotive Engineering

- Mechanical Engineering
- Material Science and Engineering
- Chemical Process Equipment

### School of Architecture

- Architectural History and Theory
- Architectural Design and Theory
- Architectural Technology and Science
- Study of Urban and Rural Planning
- Landscape Architectonics

### School of Civil and Transportation Engineering

- Structural Engineering
- Geotechnical Engineering
- Bridge and Tunnel Engineering
- Disaster Prevention and Reduction Engineering and Protective Engineering
- Solid Mechanics
- Design and Construction of Naval Architecture and Ocean Structure
- Highway and Railway Engineering
- Traffic Information Engineering and Control
- Transportation Planning and Management

### School of Electric Power

- Power System and Automation
- Power Electronics and Power Drives
- Electric Machines and Electric Apparatus
- Power Station System and Control
- High Voltage and Insulation Technology

### School of Electronic and Information Engineering

- Circuits and Systems
- Microelectronics and Solid State Electronics
- Electromagnetic Fields and Microwave Techniques
- Information and Communication Engineering (Chinese Medium/English Medium)

### School of Automation Science and Engineering

- Control Science and Control Engineering (Chinese Medium/English Medium)

### School of Materials Science and Engineering

- Chemistry and Physics of Polymers
- Microelectronics and Solid State Electronics
- Biomedical Engineering
- Materials Science and engineering (Chinese Medium/English Medium)

### School of Chemistry and Chemical Engineering

- Inorganic Chemistry
- Analytical Chemistry
- Physical Chemistry
- Organic Chemistry
- Chemical Engineering
- Industrial Catalysis
- Applied Chemistry
- Chemical Technology
- Energy Chemistry Engineering
- Biochemical Engineering

### School of Light Science and Engineering

- Pulp and Paper Engineering
- Biomass Science and Engineering

### School of Food Science and Engineering

- Sugar Engineering (Chinese Medium / English Medium)
- Food Science and Engineering (Chinese Medium / English Medium)

### School of Mathematics

- Mathematics

### School of Physics and Optoelectricity Technology

- Physical Electronics

### School of Business Administration

- Management Science and Engineering
- Accounting
- Corporate Management
- Technological Economics and Management

### School of Marxist Theory

- Research on Sinicization of Marxism

### School of Physic education

- Physical Education

# PH.D PROGRAMS UNIVERSITY TOWN CAMPUS (PANYU DISTRICT)

## School of Computer Science and Engineering

- Computer Science and Technology (Chinese Medium / English Medium)
- Security in Cyberspace

## School of Biology and Biological Engineering

- Fermentation Engineering
- Biology

## School of Software Engineering

- Software Engineering

## School of Economics and Commerce

- Applied Economics
- Management Science and Engineering
- Tourism Management

## School of Environment and Energy

- Environmental Science and Engineering (Chinese Medium / English Medium)
- Chemistry and Technology of Green Energy

## ADMISSION REQUIREMENTS

- (1) Master's degree diploma and transcripts with good record.
- (2) Language requirements for Chinese-Medium Programs:
  - New valid HSK Level 4 with scores above 180 for Science or Engineering studies;
  - New valid HSK Level 5 with scores above 180 for Liberal Arts, Economics, or Management Studies.
- (3) Language requirements for English-Medium Programs (only for non-English speaking Countries):
  - TOEFL IBT 80 or above;
  - IELTS 6.0 above or above.
- (4) Language requirements for Bilingual Program:
  - New HSK Level 4 with scores above 180 points;
  - TOEFL IBT 80 / IELTS 6.0 above (only for non-English speaking countries).
- (5) Those students who are exempt from submitting an English Language Certificate must meet the following conditions:
  - Is a citizen of an English speaking country;
  - Obtained the highest level degree of education from an institution operating in English.
- (6) Those who do not have an HSK certificate can study in the Chinese Language program at SCUT prior to their degree programs until the required certificate has been completed.
- (7) To apply for architecture related programs, please submit a portrait and a still life you have drawn.
- (8) Two recommendation letters from professors or associate professors.
- (9) A pre-acceptance letter of supervisor issued by SCUT professors or associate professors.
- (10) A study or research plan in Chinese or in English (Chinese or English, no less than 500 words).
- (11) Abstract(s) of Graduation Thesis(es) or Published Paper(s)
- (12) Those who have not tested for HSK, IELTS or TOEFL in the application year can apply to attend the Language Proficiency Test held by the School of International Education, SCUT. Students' test scores will be considered in the admission process.
- (13) Applications for changing majors will not be accepted two weeks after the semester begins.

## APPLICATION DEADLINE

- Before 30 June each year

## STUDY STARTING TIME

- September each year

## Notes

The names of majors and schools and their affiliations are subject to SCUT's latest documents.

# SCHOLARSHIPS

- CHINESE GOVERNMENT SCHOLARSHIP FOR POSTGRADUATE STUDENTS
- CONFUCIUS INSTITUTE SCHOLARSHIP
- SCUT INTERNATIONAL SCHOLARSHIP FOR EXCELLENCE
- GUANGDONG PROVINCIAL GOVERNMENT OUTSTANDING FOREIGN STUDENT SCHOLARSHIP



## Chinese Government Scholarship for Postgraduate Students

In order to increase the cooperation and understanding between China and other countries, develop outstanding international talent, SCUT will provide about 70 full scholarships for full-time postgraduate studies under the Chinese government scholarship program.

### IMPORTANT DATES

- (1) Application Deadline: 31st, March
- (2) First-round candidates will be published on the website: [www.scut.edu.cn/sie/english](http://www.scut.edu.cn/sie/english) in late May
- (3) Successful applicants will be shortlisted and published on the website: [www.scut.edu.cn/sie/english](http://www.scut.edu.cn/sie/english) in late June
- (4) The Office of International Student Recruitment will send Admission Notices and Visa application forms (JW201) to successful applicants in early July
- (5) Classes begin: early September
- (6) Delivery Address: Room 207, Building B1, Admissions Office, School of International Education, South China University of Technology, University Town Campus, Panyu District, Guangzhou, China. Post code: 510006, Tel: 86-20-39381048

### DETAILS OF THE SCHOLARSHIP (FULL SCHOLARSHIP)

- (1) Exempt from registration fee, tuition, and fee for accommodation;
- (2) Monthly Living allowance:
  - Master's degree students: RMB 3,000
  - Doctorate degree students: RMB 3,500
- (3) Comprehensive Medical Insurance for International Students in China.

### ELIGIBILITY

- (1) Applicants must be non-Chinese national and be in good health.
- (2) Education background and age limit:
  - Applicants studying to earn a Master's degree must have a Bachelor's degree and be under the age of 35
  - Applicants studying to earn a Doctorate degree must have a Master's degree and be under the age of 40.

### APPLICATION MATERIALS

#### \*Agency No: 10561 Type Category B

Apply at: <http://www.csc.edu.cn/Laihua/>

Print two copies of the application form, and post them together with the following materials:

- (1) A copy of passport
- (2) Highest diploma (original copy and notarized photocopy).
- (3) Transcripts (original copy and notarized photocopy).
- (4) A study or research plan in Chinese or in English (Chinese or English, no less than 500 words).
- (5) Two reference letters in Chinese or English from professors or associate professors,
- (6) An pre-acceptance letter of supervisor issued by SCUT professors or associate professors
- (7) The applicants of PhD have to submit Abstract(s) of Graduation Thesis(es) or Published Paper(s)
- (8) One cassette records for those applying to music programs. 2 color photographs of each: sketches, color painting, other works for those applying to fine arts programs.
- (9) Foreigner Physical Examination Form.
- (10) Available Materials:

Language Certificate

Language requirements for Chinese-Medium Programs:

- New HSK Band 4 with scores above 180 for Science or Engineering studies;
- New HSK Band 5 with scores above 180 for Liberal Arts, Economics, or Management Studies.

Language requirements for English-Medium Programs (only for non-English speaking countries):

- TOEFL IBT 80 or above;
- IELTS 6.0 above or above.

Applications from English speaking countries:

A letter of English as medium of instruction issued by graduated universities or education institutes.

Note:

\*All documents mentioned should be in either Chinese or English.

\*Translations of certificate and transcripts must be notarized.

\*All documents must be true and legal

Apply at: <http://scut.edu.cn/apply>

Updating above application material to the online application system of SCUT

## Confucius Institute Scholarship

SCUT, appointed by Confucius Institute Headquarters (Hanban) to host Confucius Institute Scholarship Program, has provided the program for scholarship students for years. With competitive course settings, diversified extra-curriculum activities and good teaching effect, SCUT has gained great appraisal by Confucius Institute Headquarters (Hanban) and students who studied at SCUT.

### CATEGORY & ELIGIBILITY

The 2018 Confucius Institute Scholarship Categories are:

- Scholarship for One-Academic-Year Study Students
- Scholarship for One-Semester Study Students
- Scholarship for Four-Week Study Students (Organized by Confucius Institutes, 10 students minimum)

Application is open to applicant who owns a non-Chinese citizens, aged between 16 and 35, in good health condition, (Applicant is currently working in a Chinese language teaching position shall not exceed the age limit of 45. Undergraduate student shall not exceed the age limit of 25).

#### 1. Scholarship for One-Academic-Year Study Students

This category provides a sponsorship for 11 months. Application is open to Confucius Institute (Classroom) students, overseas Chinese language teachers, Chinese language major students and excellent performers in HSK test. International students who are now studying in China are not eligible for the scholarship.

Applicants for the program of Teaching Chinese to Speakers of Other Languages should have a minimum score of 270 in HSK Test (Level 3), and HSKK score.

Applicants for the program of Chinese Languages should have a minimum score of 180 in HSK Test (Level 3).

#### 2. Scholarship for One-Semester Study Students

This category provides a sponsorship for 5 months. Applicant should have no prior experience of studying in China, but have a minimum score of 210 in HSK Test (Level 3), and HSKK.

#### 3. Scholarship for Four-Week Study Students(Organized by Confucius Institutes, 10 students minimum)

This category provides a sponsorship for 4-week study which is mainly focusing on Chinese language study and Chinese family home stay experience.

Application is only open to Confucius Institute (Classroom) students, excellent performers in HSK test. Applicant should submit a HSK score report, and have no prior experience of studying in China.



## DETAILS OF THE SCHOLARSHIP (FULL SCHOLARSHIP)

(1) Exempt from registration fee, tuition, and accommodation fees on campus (Textbooks and Tourism fee self-paid).

(2) Monthly living allowance: One-Academic-Year Study, One-Semester Study: RMB2,500 per month

Enrollment status is based on semesters of host institutions.

Students who are enrolled before the 15th (or on the 15th) of the admission month, are entitled to the full allowance of that month. Students, who are enrolled after the 15th of that month, are only entitled to half of the allowance.

The living allowance for the month of graduation will be granted half a month later upon confirming the graduation status by host institutions. During the study, for any students who is absent from China of personal reasons for more than 15 days (excluding legal holidays), the allowance will be suspended during absence. Allowance will be terminated in case of schooling suspension or dropping out for personal reasons.

(3) Comprehensive Medical Insurance for International Students in China.

## COURSES & PROGRAMS

General Chinese Language program, Chinese as a Foreign Language (Teaching Chinese as a Foreign Language, Chinese Language & Communications, Chinese for Business & Trade, Chinese for Tourism), Communication, Education, Literature, History, etc.

## IMPORTANT DATES

(1) Application Deadline: 20th June

(2) By the end of June, successful applicants will be shortlisted and results will be submitted to Hanban for final approved.

(3) In early July, the Office of International Student Recruitment will send the Admission Notice and Visa Application Form (JW202) to the successful applicants.

(4) Start of Classes: September 1 (Confirmed dates please refer to Admission Notice)

## APPLICATION PROCEDURE

Scholarship recruitment is open all year round on a trial basis. For applicants, recommending institutions and host institutions, please find admission procedures and scholarship recruitment results on the Confucius Institute Scholarships website (<http://cis.chinese.cn>).

1. For application, please log on to the Confucius Institute Scholarships website (<http://cis.chinese.cn>) to register, complete the Confucius Institute Scholarships Application Form online, and upload the scanned copies of relevant supporting documents.

2. Entrusted by Hanban, Confucius Institutes (independent Confucius Classrooms) in different countries, overseas Chinese language testing centers, educational and cultural sections of Chinese embassy and consulate, and host institutions in China are working as recommending institutions to engage in the applicant selection, materials review, host institutions connection, and collecting and handing over applicants' documents to host institutions.

3. Once application materials are verified by the Division of Scholarships of Hanban as valid, SCUT will then review the eligibility of applicants and submit the admission list to Hanban.

4. Hanban will conduct an overall assessment of all applications and admit applicants on the basis of competitive selection. Normally, the admission results will be announced within 45 working days after the application materials are confirmed as valid.

5. After confirming with the successful applicants, SCUT will post "Letter of Admission", "Visa Application Form for Foreigners to Study in China" (JW202 Form), copy of the scholarship certificate and other relevant documents to the recommending institutions.



## SCUT International Scholarship for Excellence

South China University of Technology (SCUT) offers the International Scholarship for Excellence to outstanding students who will matriculate into degree programs as full-time students. Selected students will receive a full or partial exemption from tuition and registration fees for the normal duration of the degree. The level of benefits depends upon the applicant's academic excellence in previous academic achievements.

### ELIGIBILITY

- (1) Applicants must be non-Chinese citizen and be in good health.
- (2) Education background:
  - a. Applicants applying for a Bachelor's degree must have high school diploma.
  - b. Applicants applying for a Master's degree must have a Bachelor's degree.
  - c. Applicants applying for a Doctorate degree must have a Master's degree.

### IMPORTANT DATES

- (1) Application Deadline: 30 June (for undergraduate students), 15th June (for postgraduate students).
- (2) By the end of July, successful applicants will be shortlisted and published on the website: [www.scut.edu.cn/sie/english](http://www.scut.edu.cn/sie/english)
- (3) Before August, the Office of International Student Recruitment will send the Admission Letter and Visa Application Form (JW202) to successful applicants.
- (4) Start of Classes: September 1 (To be confirmed)

### EVALUATION FOR RETENTION

Scholarship holders should attend the annual evaluation organized in each May. Those who are in good standing and have fulfilled the annual evaluation requirement can maintain the scholarship for the next academic year. Those who fail to reach the above requirements will be transferred to the status of self-funding students, but can attend the next evaluation to apply for the scholarship in the next academic year.

All documents need to be notarized and translated into English or Chinese before submission to the School of International Education. Applications for music are required to submit one cassette recording of the applicant's own work; Applications for fine arts must submit six color photographs of personal works.

Item	Award Grade	Benefit
Bachelor's degree	First class honor	A full exemption from tuition for four years
	Second class honor	A half exemption from tuition for four years
	Third class honor	A half exemption from tuition for two years
Master's degree	First class honor	A full exemption from tuition for three years
	Second class honor	A half exemption from tuition for three years
	Third class honor	A half exemption from tuition for two years
Doctorate degree	Full scholarship	1. A full exemption from tuition for three years 2. Living allowance: RMB 1,400 per month Note: Applicant, who has not yet passed the HSK test of required level, could apply for studying one-year Chinese program. The tuition of the Chinese study could be exempted.



## APPLICATION PROCEDURE

Apply at <http://www.scut.edu.cn/apply>,

filling in the application form online and uploading the following documents:

- (1) A copy of passport
- (2) Highest diploma (original copy and notarized photocopy).
- (3) Relevant notarized transcripts
- (4) A study or research plan (Chinese or English, no less than 500 words).
- (5) Two reference letters in Chinese or English from professors or associate professors (for postgraduate students).
- (6) An pre-acceptance letter of supervisor issued by SCUT professors or associate professors (for postgraduate students)
- (7) The applicants of PhD have to submit Abstract(s) of Graduation Thesis(es) or Published Paper(s)
- (8) One cassette records for those applying for music programs. 2 color photographs of each: sketches, color painting, other works for those applying to fine arts programs.
- (9) Foreigner Physical Examination Form.
- (10) Language Certificate

\*Language requirements for Chinese-Medium Programs:

- New HSK Band 4 with scores above 180 for Science or Engineering studies;
- New HSK Band 5 with scores above 180 for Liberal Arts, Economics, or Management Studies.

\*Language requirements for English-Medium Programs (only for non-English speaking countries):

- TOEFL IBT 68 or above; -IELTS 5.5 or above. (For undergraduate students)
- TOEFL IBT 80 or above; -IELTS 6.0 or above. (For postgraduate students)

\*Applications from English speaking countries:

A letter of English as medium of instruction issued by graduated universities or education institutes.

**Note:**

\*All documents mentioned should be in either Chinese or English.

\*Translations of certificate and transcripts must be notarized.

\*All documents must be true and legal.

## Guangdong Provincial Government Outstanding Foreign Student Scholarship

In an effort to encourage increasing numbers of outstanding overseas students to study in Guangdong, the Guangdong Government has established the Guangdong Government Outstanding Foreign Student Scholarship to promote the development of Guangdong Higher Education Management of Foreign Students and to advance international influence to Guangdong Higher Education. The scholarship is awarded to foreign full-time students with excellent performance. SCUT will provide benefit to early scholarship applicants.

### ELIGIBILITY

1. Applicants must be non-Chinese nationals and be in good health;
2. Education background and age limit:
  - Applicants studying to earn a Master's degree must have a Bachelor's degree and be under the age of 35;
  - Applicants studying to earn a Doctorate degree must have a Master's degree and be under the age of 40.

### IMPORTANT DATES

- Application Deadline: 30 June;

### STANDARD OF THE SCHOLARSHIP

Ph.d Student: RMB 30,000  
 Master Student: RMB 20,000  
 Undergraduate Student: RMB 10,000

### APPLICATION MATERIALS

Apply at: <http://www.scut.edu.cn/apply>,

Filing the application form and uploading the following documents:

- (1) Passport (photo page);
- (2) Highest diploma (notarized photocopy);
- (3) Relevant notarized transcripts for those applying for master's or doctorate degree programs;
- (4) A study or research plan in Chinese or in English (no less than 500 words);
- (5) Two reference letters in Chinese or English from professors or associate professors;
- (6) One cassette recording for those applying to music programs. 2 color photographs of each: sketches, color painting, other works for those applying to fine arts programs.
- (7) Foreigner Physical Examination Form.

Note:

\* All documents mentioned should be in either Chinese or English.

\* Translations of certificate and transcripts must be notarized.

# FEES FOR STUDYING AT SCUT

**Registration Fee:**  
RMB 450

## Tuition:

Items	Programs	Fees
Basic/Intermediate/Advanced Chinese Program	One Month (No less than 10 people)	RMB 2,560
	Two Months (No less than 10 people)	RMB 4,400
	One Semester (General Chinese)	RMB 8,500
	Two semesters (General Chinese)	RMB 16,200
	One Semester (Intensive Class)	RMB 10,000
	Two semesters (Intensive Class)	RMB 18,200
International Foundation Program	One academic year	RMB18,000
Undergraduate Program	Programs in Liberal Arts (Chinese Medium)	RMB 18,200
	Programs in Economics & Administration (Chinese Medium)	RMB 20,000
	Programs in Science & Technology (Chinese Medium)	RMB 23,000
	Programs in Arts & Design (Chinese Medium)	RMB 25,000
	Bachelor of Arts in Chinese as a Foreign Language	RMB 18,200
	Programs of English Medium & Bilingual Medium	RMB 26,000
Master Program (One academic year)	Programs in Liberal Arts (Chinese Medium)	RMB 23,000
	Programs in Economics & Administration (Chinese Medium)	RMB 25,000
	Programs in Science & Technology (Chinese Medium)	RMB 28,000
	Programs in Arts & Design (Chinese Medium)	RMB 28,000
	MBA (Chinese Medium)	RMB 44,500
	Programs of English Medium	RMB 32,000
Doctoral Programs (One academic year)	Programs in Liberal Arts (Chinese Medium)	RMB 34,000
	Programs in Economics & Administration (Chinese Medium)	RMB 34,000
	Programs in Science & Technology (Chinese Medium)	RMB 40,000
Exchange Studies of Undergraduate Program (One academic year)	Programs in Liberal Arts (Chinese Medium)	RMB 18,200
	Programs in Economics & Administration (Chinese Medium)	RMB 20,000
	Programs in Science & Technology (Chinese Medium)	RMB 23,000
	Programs in Arts & Design (Chinese Medium)	RMB 25,000
Exchange Studies of Postgraduate Program (One academic year)	Programs in Liberal Arts (Chinese Medium)	RMB 23,000
	Programs in Economics & Administration (Chinese Medium)	RMB 25,000
	Programs in Science & Technology (Chinese Medium)	RMB 28,000
	Programs in Arts & Design (Chinese Medium)	RMB 28,000

## Accommodation Fees

Items		Fees
Wushan Campus (Air-conditioned)	Accommodation Fee (From the beginning of Autumn semester to the end of Spring semester, 10 months in total)	Single: RMB 15,000 Double: RMB 9,800 Triple: RMB 8,000
	Accommodation Fee (During the Winter/ Summer Vacation)	Single: RMB 50/day Double: RMB 33/day Triple: RMB 27/day
With over 380 rooms and six different room types to choose from, you will find a great place on our Wushan Campus. All rooms are fully furnished and include individual bathrooms, internet access ports, telephones, TV (except 1st Floor) and air-conditioning in some rooms. You will also have a fully fitted kitchen, coin-operated laundry facilities, and entertainment room and security service in the dormitory building.		
University Town Campus (Air-conditioned)	Accommodation Fee (From the beginning of the Autumn semester to the end of Spring semester, 10 months in total)	Double Room: RMB 8,000 Four-bed Room: RMB 3,500
	Accommodation Fee (During the Winter/ Summer Holiday)	Double Room: RMB 27/day Four-bed Room: RMB 12/day
All rooms are fully furnished at University Town Campus, including individual bathrooms, internet access ports, telephones and air-conditioning. You will also have a fully fitted kitchen, coin-operated laundry facilities, gym room, and Ping-pong room; snooker room and security service in the dormitory building.		

### Notes:

- (1) Accommodation Reservation Service is not available. The rule is: First Come, First Served.
- (2) Students may choose to live off campus. Note that international students have to register at the local police station within 24 hours of moving into off-campus housing.
- (3) Students should pay the fees on time and in full in the registration time. It is suggested that students apply for a bank card with UNION payment in China's banks first and then pay by card. Usually, deferral application is unacceptable.
- (4) The Admission Letter will become invalid if the applicant is holding the expired visa in China.
- (5) SCUT can only provide the first two years' accommodation for self-support international students.
- (6) The tuition and accommodation fees are nonrefundable if a student withdraws from the program.
- (7) Except register fee, tuition and accommodation fee, the other fees transferred to SCUT's bank account are unacceptable and refundable.

### Budget

In total, for studying at SCUT, you need to prepare a budget as follows; this amount covers tuition, accommodation, living expenses and other related fees:

For one year of Chinese language studies	RMB 40,000
For one year of Bachelor's degree study in Liberal Arts or Administration	RMB 42,000
For one year of Bachelor's degree study in Science or Engineering	RMB 46,000

### Living Expenses:

We estimate that a single student living in Guangzhou will need RMB15,000-20,000 for living expenses annually in addition to the tuition and accommodation fees. This amount includes food, clothes, books and travels.

**Insurance:**  
RMB 800/ year

**Foreigner Physical Examination:**  
About RMB 700

**Application for Resident Permit:**  
RMB 800 (12 months above),  
RMB 400 (less than 12 months)

**Campus Card:**  
RMB 35





# UNIVERSITY FACILITIES

## LIBRARY FEATURES

- One of the top national university libraries of science and technology
- One of 13 National Foreign Teaching Material Centers for Chinese Ministry of Education
- Total area of 67,169 square meters
- Collection of 3,540,000 volumes of literature
- Collection of 3,340,000 volumes of digital literature
- Access to 163 key domestic and foreign network electronic databases
- Digital sources of both campuses can be shared
- Provide about 600 professional databases using "Dialog", an international searching system
- Inter-access to six key Guangzhou Shipai District university libraries
- Service center with information inquiry, digital, photography, typing and photocopy services
- Wireless service readily available in both libraries

## IT FACILITIES

SCUT provides a wide range of IT facilities including:

- University computer network, email and internet access
- PC facilities and central servers
- Online learning capability
- Classroom presentation technology
- IT training and practice
- Digital technology loans
- Media production
- Video conference suites
- Language Lab to assist students with any level of linguistic skills
- Computer room is in the international student dormitory

## CURRENCY & BANKING

Foreign currencies, such as British Pound, HK Dollar, US Dollar, Euro, Japanese Yen, Canadian Dollar, Australian Dollar, etc. can be exchanged for RMB at local banks. Money transactions can be completed at Automated Teller Machines (ATM) using one of these seven foreign cards: American Express, MasterCard, VISA, Dinner's Club Card, JCB, Million Card, and Federal Card.

There is an Industrial and Commercial Bank of China (ICBC) opposite the International Student Dorm on the Wushan campus. In addition, the Industrial and Commercial Bank of China, Bank of China, China Construction Bank, and Agricultural Bank of China are located around the Wushan campus.

## SPORTS FACILITIES

Wushan Campus:

- 1 golf club
- 21 basketball courts
- 8 tennis courts
- 16 badminton courts, international standard
- 1 swimming pool
- 4 volleyball courts
- 2 gyms
- 1 ground track and field
- 50 ping-pong tables
- 1 skating rink with an area of 800 square meters

University Town Campus:

- 21 basketball courts
- 4 tennis courts
- 14 badminton courts, international standard
- 2 swimming pools
- 5 volleyball courts
- 2 gyms
- 1 kickboxing training field
- 2 ground track and fields

## STUDENT CANTEENS

Wushan Campus:

There are four student canteens at the Wushan Campus that offer a great variety of food: Xihu Canteen, Northern Area Canteen, No. 6 Canteen, and the Muslim Canteen. A variety of restaurants are also near campus, such as McDonald's, KFC, etc. A group kitchen inside the residence enables students to cook their own meals. Students will find living and study items at the pleasant on-campus mini-markets.

University Town Campus:

The University Town Campus has two student canteens, one of which offers Muslim food. Food can be purchased at the on-campus supermarket.

# APPLICATION PROCEDURE



Log on [www.scut.edu.cn/apply](http://www.scut.edu.cn/apply) and establish an account



Fill out the applicant's personal information and upload the scanned copy of supporting documents (Listed below)



About 7-14 workdays to process

If you are accepted, you will receive an electronic Admission Letter



About 45 days to process  
JW202 Form

Visa Application Form (JW202) Form and Official Admission Letter



About 7 days for delivery

The Study Visa (X1 or X2 Visa) in China's Embassy



Report your arrival at SCUT

*\*Please upload the required documents in order to fulfill your application procedure. Each document has to be smaller than 1MB.*

*\*Certificates, diplomas and transcripts must be notarized copies. All of the documents should be translated into Chinese or English.*

*\*Two weeks after the semester starts, the application for changing majors will not be accepted.*

*\*If you have previously studied at any Chinese university, please upload the Visa page of your passport and prepare a transfer letter which includes your attendance record(should be above 80%).*

## CHECKLIST

	Chinese Language	International Foundation	Undergraduate	Master	Ph. D.	Ordinary & Advanced Studying
Passport Copy (Valid duration covers your study period at SCUT)	✓	✓	✓	✓	✓	✓
Passport Photo (Within six months)	✓	✓	✓	✓	✓	✓
HSK Certificate (For Chinese Medium Programs only)			✓	✓	✓	✓
English Test Result (TOEFL/IELTS or any other English Proficiency Certificate, For English Medium Programs only )		✓	✓	✓	✓	✓
High School O' Level Certificate and Transcripts		✓				
High School Diploma and Transcripts			✓			
Bachelor Diploma and Transcripts				✓		
Master Diploma and Transcripts					✓	
2 Recommendation Letters				✓	✓	
Personal Statement / Study Plan / Research Proposal				✓	✓	
Foreigner Physical Examination Form	✓	✓	✓	✓	✓	✓
Portrait or Still Life drawn by yourself (Only for architecture related majors)			✓	✓	✓	✓

<http://en.scut.edu.cn/>

    [sieweb@scut.edu.cn](mailto:sieweb@scut.edu.cn) |  [studyatscut](#)

Tel: +86(0)20 39381048

+86(0)20 39381029

Fax: +86(0)20 39381058

E-mail: [sieinfo@scut.edu.cn](mailto:sieinfo@scut.edu.cn)



B1-207, School of International Education, South  
China University of Technology, University Town,  
Guangzhou, China, 510006

Apply Online: [www.scut.edu.cn/apply](http://www.scut.edu.cn/apply)

All right reserved and any unauthorized  
duplication will be prosecuted.

版权所有 翻版必究